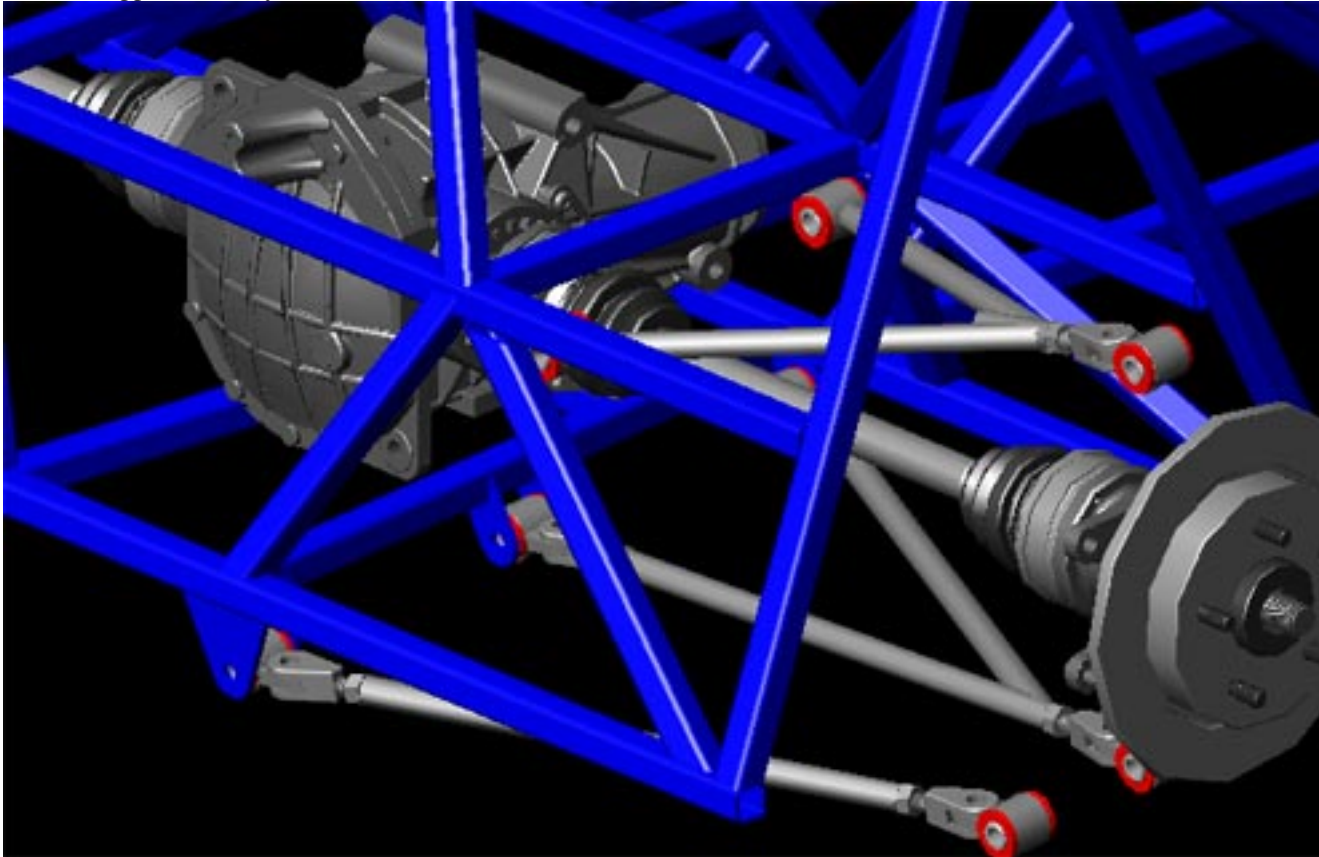


[http://www.super7thheaven.co.uk/Sierra\\_Rear\\_Differential](http://www.super7thheaven.co.uk/Sierra_Rear_Differential)

# Sierra Differential

Despite its' age, the Ford Sierra Diff still dominates as the No. 1 choice of diff for kit car builders. It's been well documented that they can cope with 300bhp without too much hassle and even very high mileage units show very little signs of wear. Various differentials were looked at for this design. For instance the modern Jaguars have strong differentials but their final drive ratios are far too low, the same also applies to many Nissan and BMW diffs.



[Sierra Rear Diff Video \(LSD\)](#)

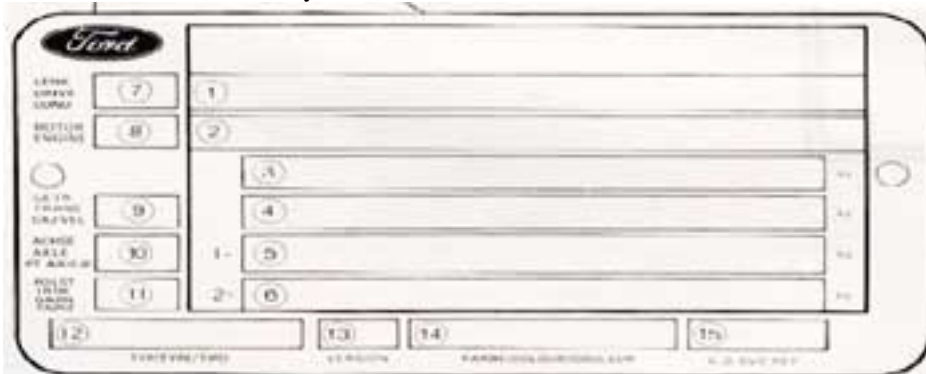
[Sierra Rear Differential Image Gallery](#)

The other advantage of these differentials is that they can still be found in reasonable supply on auction websites. The price is slowly increasing and maybe one day soon the BMW unit will take over, but for now it is here to stay.

There are a vast array of drive ratios, some more common than others. Casings are available in 7" or 7.5" formats with push in or bolt on shaft fitments. The push in versions are also available with a different number of splines. Some are available with LSD others not. The choice is bewildering.

## **Identifying your Ford Sierra differential.**

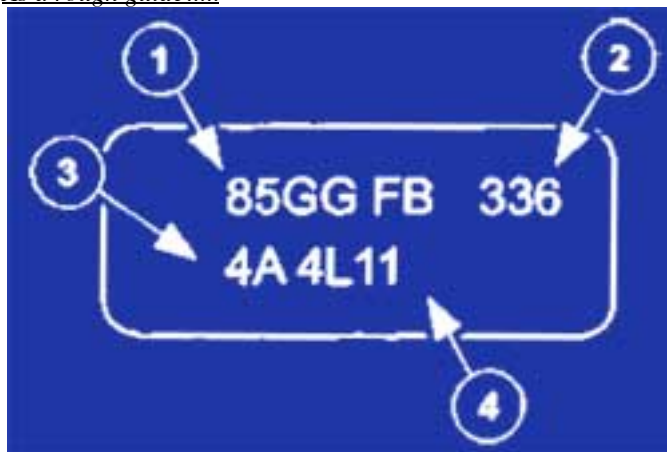
If the donor car is available you can read the VIN plate, for the "Final Drive Code" or "AXLE". The final drive ratio is describe by a letter.



A=3.36(crown wheel 44 teeth, pinion 13 teeth, 7.5" diff casing)	B=3.77	D=3.92(crown wheel 51 teeth, pinion 13 teeth, 7.5" diff casing)
F=3.842	J=4.056	K=3.31
M=3.14(crown wheel 47 teeth, pinion 15 teeth, 7"/7.5" diff casing)	N=4.29	P=3.58
U=3.62(7" diff casing)	V=3.33(crown wheel 47 teeth, pinion 13 teeth, 7" diff casing)	Z=3.59
2=4.27	3=3.62 / 3.64?	4=3.82
5=3.26	6=3.12	8=3.56
9=3.91(7.5" diff casing)		

If the VIN plate is not visible, there may be a small aluminium tag attached to the top left hand side of the rear cover. There are a vast number of codes and it may be that a visit to your friendly Ford dealer is in order. There are many web sites and magazine articles, quoting codes and ways of deciphering the codes and often the information is conflicting or simply incomplete. The only real way to identify a diff is to physically test it. For instance, if you turn the front flange and both drive flanges rotate in the same direction, it's an LSD.

As a rough guide.....



Identification on Tag.

1. Casing style
2. Axle Ratio E.g. 3.36:1
3. Assembly Plant
4. Build Date
  - 4 = Build Year (1984)
  - L = Build Month
    - A = Jan, B = Feb, C = Mar, D = Apr, E = May, F = Jun, G = Jul, H = Aug, J = Sep, K = Oct, L = Nov, M = Dec
  - 11 = Build Day (11th)

On some Sierra diff ID plates the numbers will be in a different format. There will be some numbers / letters (look at the top row)

EG. 85GG 4006 DC

The first set (85GG) is the case type (7" or 7.5") and the easiest way to identify a 7" and 7.5" is to look at the top mounting. The 7" (left) has one long bolt/nut and the 7.5" (right) has 2 bolts.



*NB. The unit on the left is a Tripod unit with push in shafts and the right hand unit is the more desirable Lobro unit with external bolt flanges for the drive shafts.*

In this view you can clearly see the size difference (7.5" on left):



*NB. The internals of the 7" are almost identical to the 7.5" (apart from the reduction gear ratios), so there are no differences in strength.*

The other non-numeric code (middle or end), in this code its 'DC' which is an 'OPEN' type diff (NON-LSD). *Generally*, any diff with 2 or more "A" in the middle code will be an LSD e.g. "AA" or "ABA". This doesn't mean that if it hasn't, it's not an LSD, it's just easy to remember. *There are several exceptions to this rule.*

Some codes are in the format 85BB 362 AA.

In this case, the first 4 digits (85BB) are still the casing code and the AA is the diff style (In this case LSD). The middle 3 digits represent the ratio (in this case 3.62 :1)





Another way to identify what ratio you have is to undo the T50 Torx bolts securing the rear cover and inspect the writing and stamps on the internal gearing.

If you are lucky there will be some handwriting to the large Crown gear. This is easily rubbed off. The 7" differential below is from a Escort Cosworth 4x4.



In this case the yellow writing states '2E 603 362'. The '362' indicates this is a 3.62:1.  
If this writing has been lost then also stamped into this Crown gear is the Ford part number.  
The number reads 'Ford 90BG-4210AA 3,62'.  
By counting teeth of the Crown and Pinion gears you can calculate the ratio.  
 $\frac{47}{13} \approx 3.6154$  (3.62:1)



Sierra Diff

Engine	Model	Transmission	Ratio	Number of Teeth
--------	-------	--------------	-------	-----------------

	Sedan Axle	Estate Axle	Man	Auto		Ring Gear	Pinion
1.6 OHC 2V	6.5" 7"	7"	X	-	Sedan 3.62 Estate 3.92	47 47	13 12
1.8 OHC 2V	6.5" 7"	7"	X	X	Sedan 3.62 <sup>(1)</sup> Estate 3.62 <sup>(1)</sup> Sedan 3.92 <sup>(2)</sup> Sedan 3.38 <sup>(3)</sup>	47 47 47 44	13 13 12 13
2.0 OHC 2V	7"	7"	X	X	3.62 3.38 <sup>(4)</sup>	47 44	13 13
2.0 OHC EFI	7"	7"	X X	X	3.92 3.62 3.62 <sup>(5)</sup>	47 47 47	12 13 13
2.0 OHC EFI MC	7"	7"	X	X	3.62	47	13
2.8 V6 HC FI 4x4	7"	7"	X	X	3.62	47	13
2.8 V6 HC EFI	7.5"	7.5"	X	X	3.36 <sup>(5)</sup> 3.36 <sup>(5)</sup>	47 47	14 15
2.8 V6 HC EFI 4x4	7"	7"	X	-	3.62 <sup>(5)</sup>	47	13
2.3 Diesel	7"	7"	X	-	3.38	44	13

<sup>(1)</sup>Not for 5 speed right hand drive sedan (& LHD Italy + Spain)

<sup>(2)</sup>Only for 5 speed right hand drive sedan

<sup>(3)</sup>Only for France

<sup>(4)</sup>Not for Sweden

<sup>(5)</sup>Only for Sweden

The 7.5" rear Granada / Scorpio differential has a different shaped housing.



(FINIS CODE 6141389)

The following table is a collation of what I have found :

(unfortunately, I cannot verify this data)

Ford Sierra Differential Ratios

Ratio	Vehicle	Shaft	Diff	Teeth	FINIS	Part No.
3.14	Sierra[TL16](-Mar83)(D), Sierra[TL16](-Apr83)(UK), Sierra[TV23.PD23], Sierra[TV28INJ-AUTO], Sierra[TL20H](non-ABS), Sierra[DL20H](non-ABS), Sierra[PD23](-Jan90)(non-ABS)	Tripod	Non-LSD		6107624	83BG 4006 KC
3.14	Sierra[TV28INJ](-Jan90)	Lobro	Non-LSD		1644899	85GG 4006 GB
3.14	Sierra[DL20](ABS), Sierra[PD23](ABS)(-Jan90), Granada[DL20](Feb92-)	Lobro	Non-LSD		6152100	87BG 4006 BA
3.14	Granada[DL20](Feb92-)	Lobro	LSD		6193181	88GG 4006 AEA
3.14	Sierra[TL16,TV23,PD23]	Tripod	LSD		1619200	V83BG 4006 AA
3.14	Sierra	Lobro	LSD		1648395	V87BG 4006 DAA

Ford Sierra Differential Ratios

Ratio	Vehicle	Shaft	Diff	Teeth	FINIS	Part No.
3.36	Sierra[TV28INJ](5Spd-Type9)	Tripod	Non-LSD		6131195	83BG 4006 BA
3.36	Sierra[TV29](Jan90-May91)	Lobro	LSD		6142222	85GG 4006 AAA 8500 4006 AAA
3.36	Sierra[LL23INJ](XR4)(USA/CDN), Sierra[TV28](-Jan90), Sierra[TV29](-May91)	Lobro	Non-LSD		6124451	85GG 4006 FB, 8500 4006 FB
3.36	Sierra[TV29](2WD)(May90-), Granada[TV29](2WD)(Feb92-), Granada[PD25T](Feb92-)	Lobro	LSD		6663905	91GG 4006 AAA
3.36	Sierra[TV29](May90-), Granada[TV29](2WD)(Feb92-), Granada[PD25T](Feb92-)	Lobro	Non-LSD		6663908	91GG 4006 FA
3.36	Granada[CP29]	Lobro	LSD		6831237	93GG 4006 AAA
3.36	Granada[VM25](Aug93-), Scorpio[VM25](Oct94-Jan96)	Lobro	Non-LSD		6803399	94GG 4006 AA
3.36	Scorpio[VM25](Jan96-)	Lobro	LSD		1026116	96GG 4006 BDA
3.36	Scorpio[VM25](Jan96-Sep96)	Lobro	Non-LSD		1015630	96GG 4006 FA
3.36	Scorpio[VM25](Sep96-)	Lobro	Non-LSD		1035424	97GG 4006 AA
3.38	Sierra[HL18](Jan91-), Sierra[D18T](Jan90-), Sierra[TL16,TL18,TL20,TL20H,TV20,TV23,PD23]	Tripod	Non-LSD		6107625	83BG 4006 LC
3.38	Sierra[TL18,TL20,PD23] Sierra[HL18](Aug89-),	Lobro	Non-LSD		1630004	85GG 4006 AC, 8500 4006 AC
3.38	Sierra[TL16,TL20,TV]	Tripod	LSD?		1619201	V83BG 4006 BA
3.38	Sierra	Lobro	LSD		1648394	V87BG 4006 CAA
3.62	Sierra[TL16,TL18](Jun85-),	Tripod	Non-LSD		6107623	83BG 4006 CC
3.62	Sierra[TL16,TL18](Jun85-),	Tripod	Non-LSD	23	6157715	83BG 4006 CD
3.62	Sierra[TL18](Man)(Jun85-),	Tripod	Non-LSD	26	6157715	83BG 4006 CD
3.62	Sierra[TL20H,TV,TL18,HL18], Sierra[TL20INJ](GL,GHIA,2.0iS), Sierra[TL20,DL20](-Jan90), Sierra[TL20,DL20,D18T](Jan90-)	Tripod	Non-LSD		6107626	83BG 4006 MC
3.62	Sierra[TL16,TL18](Jun85-), Sierra[TL16]	Tripod	Non-LSD	26	6107626	83BG 4006 MC
3.62	Sierra[TL18](Man)	Tripod	Non-LSD	28	6107626	83BG 4006 MC
3.62	Sierra[TV28INJ](XR4)	Tripod	Non-LSD		6124295	83BG 4006 RC
3.62	Sierra[TL16,TL18,TL20,DL20]	Lobro	Non-LSD		6146560	85GG 4006 BC, 8500 4006 BC
3.62	Sierra(TV28INJ)	Tripod	LSD		1619202	V83BG 4006 CA
3.62	Sierra[TV28INJ,DL20,TV29], Sierra[CH20](Feb90-), Granada[CP29](4wd)(Feb92-)	Lobro	LSD		1627946	V85BB 4006 AA
3.62	Sierra[DL20](Jan90-), Sierra[D18T]	Lobro	LSD		1648393	V87BG 4006 BAA
3.64	Granada(85-92)	Lobro	LSD			85GG 4006 ACA
3.64	Sierra[LL23INJ](XR4)(USA,CDN)	Lobro	Non-LSD		6137510	85GG 4006 HB
3.64	Sierra(Cosworth)	Lobro	LSD			86BB 4006 AAA
3.64	Granada(2WD)(Feb92-)	Lobro	LSD		6663907	91GG 4006 ACA
3.64	Scorpio(Cosworth)	Lobro	LSD			91GG 4006 ADA
3.64	Scorpio	Lobro	LSD			95GG 4006 ACA
3.64	Granada(2WD)(Feb92-)	Lobro	Non-LSD		6663910	91GG 4006 HA
3.64	Scorpio[CP29](Oct94-Jan96), Scorpio[TV29](Oct94-Jan96)	Lobro	Non-LSD		7035888	95GG 4006 JA
3.64	Scorpio[TV29](Jan96-Aug96)	Lobro	LSD		1026114	96GG 4006 BCA



Ford Sierra Differential Ratios

Ratio	Vehicle	Shaft	Diff	Teeth	FINIS	Part No.
3.64	Scorpio[CP29](Jan96–), Scorpio[TV29](Jan96–Aug96)	Lobro	Non-LSD		1015634	96GG 4006 EA
3.77	Sierra[TL13]	Tripod	Non-LSD		6099509	83BG 4006 AC
3.77	Sierra[TL13]	Tripod	Non-LSD		1637523	83BG 4006 AD
3.91	Sierra[DL20](Aug90–)	Lobro	LSD		6490065	89GG 4006 AA
3.91	Sierra[DL20](Jan90–May91)	Lobro	LSD		6490066	89GG 4006 AAA
3.91	Sierra[DL20](May91–), Granada(Feb92–)	Lobro	LSD		6663906	91GG 4006 ABA
3.91	Sierra[DL20](May91–), Granada(Feb92–)	Lobro	Non-LSD		6663909	91GG 4006 GA
3.91	Scorpio[DH23](May96–)	Lobro	Non-LSD		1017523	96GG 4006 BA
3.92	Sierra[TL16](–Oct84)	Tripod	Non-LSD		6099514	83BG 4006 JC
3.92	Sierra[TL16](Oct84–), Sierra[TL20INJ](2.0iS), Sierra[TL16,HL18,TL20]	Tripod	Non-LSD		1627164	83BG 4006 JD
3.92	Sierra[TL16,TL18,HL18,TL20INJ], Granada(Feb92–)	Lobro	Non-LSD		6146561	85GG 4006 DC, 8500 4006 DC
3.92	Sierra[DL20](Jan90–), Granada(Feb92–)	Lobro	LSD		6171465	86GG 4006 AAA, 8600 4006 AAA
3.92	Sierra[DL20](–Oct90)	Tripod	Non-LSD		6490064	89BG 4006 AA
3.92	Sierra[DL20](Oct90–May91)	Tripod	LSD		6490064	89BG 4006 AA
3.92	Sierra[DL20](May91–)	Tripod	LSD		6663904	91BG 4006 AA
3.92	Sierra[TL16]	Tripod	LSD		1619204	V83BG 4006 EA
3.92	Sierra[TL16], Sierra[TL20INJ](2.0iS)	Tripod	LSD		1630675	V83BG 4006 EB
4.09	Scorpio[DL20](Jun95–Jan96)	Lobro	LSD		1013747	95GG 4006 AAA
	Scorpio[DL20](Oct94–Jan96)	Lobro	Non-LSD		7035886	95GG 4006 AA
4.09	Scorpio[DL20](Jan96–)	Lobro	LSD		1015626	96GG 4006 BAA
4.09	Scorpio[DL20](Jan96–)	Lobro	Non-LSD		1015621	96GG 4006 CA
4.27	Scorpio[DH20](Oct94–Jan96)	Lobro	Non-LSD		7091521	95GG 4006 LA
4.27	Scorpio[DH20](Jan96–May96)	Lobro	Non-LSD		1015627	96GG 4006 DA

The following cars were fitted with LSD's but it also always important to double check.

- All 4x4 Sierra's and Granada's (2.8/9 and 2.0DOHC and Cosworth)
- Most but not all 24v Cosworth Granada/Scorpio (up to approx 1994 are LSD, after that they are 'open' type because the Scorpio 24v had traction control instead)
- All RWD Cosworth Sierra (3dr, Sapphire, RS500)

### **Diff Mountings**

As mentioned above there are two sizes of diff casing (7" and 7.5").

The 7.5" is available with two different rear covers (top mount and 'Koala' rear mount). Both covers are interchangeable. The 'Koala' rear mount diffs are from the late model 'face-lift' Granada's, known as Scorpio or Ultima.

The top mount diffs have 4x13mm bolts (early) or 4x15mm (later).



The Sierra diff has 2 types of drive-shafts: Lobro (Bolt-on - *left picture*) and Tripod (Splined - push in - *right picture*).

Diffs with Tripod type shafts are designed to be used with Drum Brake equipped hubs, However, it is possible with the use of adaptor plates or hybrid shaft / hub combos, to use disc brakes. Bolt-On units are favoured as ultimately they are stronger, but for less extreme applications the Lobro units are fine.



### **Final Drive Ratios**

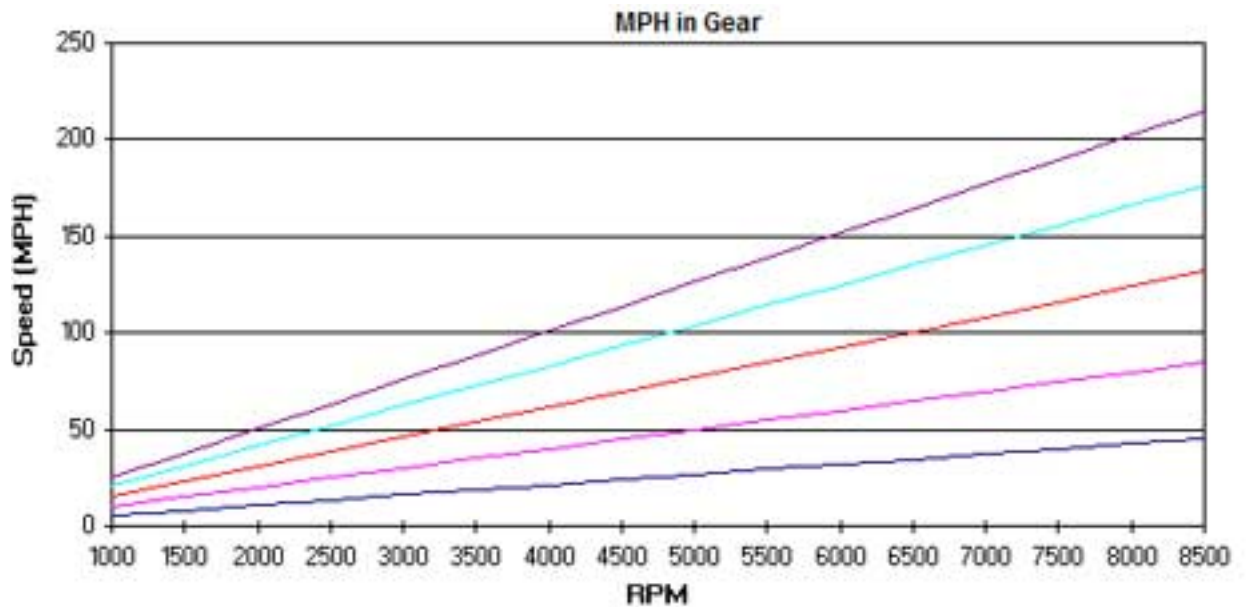
The gear ratios of the MT75-4x4 gearbox are :

- 1st Gear - 3.89
- 2nd Gear - 2.08
- 3rd Gear - 1.34
- 4th Gear - 1
- 5th Gear - 0.82

I've found a very useful gear calculator here :

[Ms Excel Gear Ratio Calculator](#)

The plan for this project is to use 265x30x19 tyres, coupled to a 3.62 diff. Ideally, the diff ratio should be closer to 4.27:1 but unfortunately this front diff ratio is not available. With this combination the theoretical top speed would be close to 155mph. Having been in a Super 7 at 120mph, I know 150mph would be more dumb than challenging.



### **The Sierra Diff 4x4 route**

With the aim being to go 4wd, the choice drops drastically. The Sierra front diff comes in 2 ratios, 3.62:1 & 3.92:1 (now very rare).

The target donors would be :

- 2.0lt DOHC 4x4 Sierra (1982-1993) - 3.92:1 (rare!)
- 2.9V6 4x4 Sierra (xr4x4i) -3.62:1
- Cosworth Sierra 4x4 -3.62:1
- 1.8 Turbo Diesel Sierra (with ABS) -3.62:1
- Cosworth Escort 4x4 (1992-1996) -3.62:1
- Granada Scorpio (1985-1991) -3.62:1
- Granada 4x4 -3.62:1

If you want LSD the choice drops even further - *see above list*

Going the 4x4 route with the MT75 gearbox and Sierra diffs, there will be a permanent 34% / 66% split on front / rear power. Therefore, most of the power is going to the rear, hence why only the rear differential was fitted with Limited Slip.

# Ford Sierra (CD1) 06/86 1/1

*NB. This microfiche was converted automatically, although I have made an effort to validate the data, sometimes mistakes are hard to spot.*

## C01.10 - REAR AXLE DIFFERENTIAL AND CARRIER DRIVE SHAFT

### *Finis No*

FOR TRANSMISSION

A) TYPE 2 - LIGHT SERIES WITH SHORT GEAR LEVER (4 SPEED)

B) TYPE 3 - MEDIUM SERIES WITH SHORT GEAR CHANGE LEVER / BRITISH DESIGN (4 SPEED)

C) TYPE 3 - MEDIUM SERIES WITH SHORT GEAR CHANGE LEVER / GERMAN DESIGN (4 SPEED)

D) TYPE 9 - 5 SPEED

E) EXCHANGE PART

F) AUTOMATIC - 3 SPEED

G) AUTOMATIC - 4 SPEED

H) EXCEPT FOUR-WHEEL DRIVE

I) USE ONLY WITH FOUR-WHEEL SYSTEM

K) ALTERNATIVE WITH TL16 AND TL18 ONLY

Ill. Ref.	PART NAME	MOD	MOD YEAR	PROD	FINIS NO.	QTY	PART NUMBER
1	<b>DIFFERENTIAL, CARRIER AND EXTENSION</b>						
	WITHOUT LIMITED SLIP DIFFERENTIAL						
3.14	TL16	12	-0383	D	6107624	1	83BG 4006 KC
3.14	TL16		-0483	GB	6107624	1	83BG 4006 KC
3.14	TV23, PD23				6107624	1	83BG 4006 KC
3.14	TV28INJ + "S", "CH" AUTO-MATIC			D	6107624	1	83BG 4006 KC
3.36	TV28INJ + "S", "CH" MANUAL			D	D) 6131195	1	83BG 4006 BA
3.38	TL16	12			6107625	1	83BG 4006 LC
3.38	TL18 + "F"	12			6107625	1	83BG 4006 LC
3.38	TL20, TV20, TV23				6107625	1	83BG 4006 LC
	NUMBER OF TEETH						
3.62	TL16	12	-0685		6107623	1	83BG 4006 CC
3.62	TL16 23	12	0685-		K) 6157715	1	83BG 4006 CD
3.62	TL16 26	12	0685-		K) 6107626	1	83BG 4006 MC
3.62	TL18		-0685		6107623	1	83BG 4006 CC
3.62	TL18 23		0685-		K) 6157715	1	83BG 4006 CD
3.62	TL18 26		0685-		K) 6107626	1	83BG 4006 MC
3.62	TL20H, TV	126			6107626	1	83BG 4006 MC
3.62	TL20INJ GL, GHIA				6107626	1	83BG 4006 MC
3.62	TL20INJ 2.0 IS				6107626	1	83BG 4006 MC
3.62	TV28INJ XR4	4			H) 6124295	1	83BG 4006 RC
3.77	TL13	12			6099509 (1637523)	1 MIX	83BG 4006 AC 83BG 4006 AD
3.92	TL16		-1084	D	6099514	1	83BG 4006 JC
3.92	TL16		1084-	D	1627164	1	83BG 4006 JD
3.92	TL16		-1184	GB	6099514	1	+) 1627164
3.92	TL16		1184-	GB	1627164	1	83BG 4006 JD

	3.92	TL20INJ	2.0 IS				1627164	1	83BG 4006 JD
2	3.62	TV28INJ					l) 1627946	1	V85BB 4006 AA
	3.36	LL23INJ	+"USA", "CDN"	XR4	4	D	6124451	1	85GG 4006 FB
	3.64	LL23INJ	+"USA", "CDN"	XR4	4	D	6137510	1	85GG 4006 HB
1	WITH LIMITED SLIP DIFFERENTIAL								
	3.14	TL16, TV23, PD23					1619200	1	V83BG 4006 AA
	3.38	TL16, TL20, TV					1619201	1	V83BG 4006 BA
	3.62	TL20, TV20, TV23					1619202	1	V83BG 4006 CA
	3.62	TV28INJ		XR4	4		1619203	1	+2) 1619202
	3.64	CL20					1637548	1	V86BB 4006 AAA
	3.92	TL16					1619204	1	V83BG 4006 EA
	3.92	TL16				GB	1630675	1	V83BG 4006 EB
	3.92	TL20INJ	2.0 IS				1630675	1	V83BG 4006 EB
3	<b>SHAFT AND CONSTANT VELOCITY JOINT ASSY - (REAR AXLE)</b>								
	TL13	3.77		RH	12	-0983	6091805)	1	83BG 4234 CA
	TL13	3.77		RH	12	-0983	6101694)	1	+2) 1619183
	TL13	3.77		RH		0983-	1619181)	1	83BG 4234 CB
	TL13	3.77		RH		0983-	1619183)	1	83BG 4234 EB
	TL13	3.77		LH	12	-0983	6091806)	1	83BG 4234 DA
	TL13	3.77		LH	12	-0983	6101695)	1	+2) 1619184
	TL13	3.77		LH		0983-	1619182)	1	83BG 4234 DB
	TL13	3.77		LH		0983-	1619184)	1	83BG 4234 FB
	TL16	3.14		RH	12	-0983	6104061)	1	83BG 4234 GA
	TL16	3.14		RH	12	-0983	6104063)	1	83BG 4234 JA
	TL16	3.14		RH	12	0983-	1619185)	1	83BG 4234 GB
	TL16	3.14		RH	12	0983-	1619185)	1	83BG 4234 JB
	TL16	3.14		LH	12	-0983	6104062)	1	83BG 4234 HA
	TL16	3.14		LH	12	-0983	6104064)	1	83BG 4234 KA
	TL16	3.14		LH	12	0983-	6135022)	1	83BG 4234 HB
	TL16	3.14		LH	12	0983-	1619187)	1	83BG 4234 KB
	TL16	3.38		RH	12	-0983	6104063)	1	83BG 4234 JA
	TL16	3.38		RH	12	-0983	6014061)	1	83BG 4234 GA
	TL16	3.38		RH	12	0983- 0184	1619186)	1	83BG 4234 JB
	TL16	3.38		RH	12	0983- 0184	1619185)	1	83BG 4234 GB



TL16	3.38		RH	1-6	0184-	1619186)	1	83BG 4234 JB
TL16	3.38		RH	1-6	0184-	1619185)	1	83BG 4234 GB
TL16	3.38		LH	12	-0983	6104062)	1	83BG 4234 HA
TL16	3.38		LH	12	-0983	6104064)	1	83BG 4234 KA
TL16	3.38		LH	12	0983-0184	6135022)	1	83BG 4234 HB
TL16	3.38		LH	12	0983-0184	1619187)	1	83BG 4234 KB
TL16	3.38		LH	1-6	0184-	1619187)	1	83BG 4234 KB
TL16	3.38		LH	1-6	0184-	6135022)	1	83BG 4234 HB
NUMBER OF TEETH								
TL16	3.62		RH	12	-0983	6091805)	1	83BG 4234 CA
TL16	3.62		RH	12	-0983	6101694)	1	+2) 1619183
TL16	3.62	28/26	RH		0983-	1619186)	1	83BG 4234 GB
TL16	3.62	28/26	RH		0983-	1619185)	1	83BG 4234 JB
TL16	3.62	28/23	RH		0983-	1619181)	1	83BG 4234 CB
TL16	3.62	28/23	RH		0983-	1619183)	1	83BG 4234 EB
TL16	3.62		LH	12	-0983	6091806)	1	83BG 4234 DA
TL16	3.62		LH	12	-0983	6101695)	1	+2) 1619184
TL16	3.62	28/26	LH		0983-	6135022)	1	83BG 4234 HB
TL16	3.62	28/26	LH		0983-	1619187)	1	83BG 4234 KB
TL16	3.62	28/23	LH		0983-	1619182)	1	83BG 4234 DB
TL16	3.62	28/23	LH		0983-	1619184)	1	83BG 4234 FB
TL16	3.77		RH	12	-0983	6091805)	1	83BG 4234 CA
TL16	3.77		RH	12	-0983	1619181)	1	83BG 4234 CB
TL16	3.77		RH			1619183)	1	83BG 4234 EB
TL16	3.77		LH	12	-0983	6031806)	1	83BG 4234 DA
TL16	3.77		LH	12	-0983	6101695)	1	+2) 1619184
TL16	3.77		LH		0983-	1619182)	1	83BG 4234 DB
TL16	3.77		LH		0983-	1619184)	1	83BG 4234 FB
TL16	3.92		RH	12	-0983	6104063)	1	83BG 4234 JA
TL16	3.92		RH	12	-0983	6104061)	1	83BG 4234 GA
TL16	3.92		RH	12	0983-0184	1619186)	1	83BG 4234 JB
TL16	3.92		RH	12	0983-0184	1619185)	1	83BG 4234 GB
TL16	3.92		RH	1-6	0184-	1619186)	1	83BG 4234 JB
TL16	3.92		RH	1-6	0184-	1619185)	1	83BG 4234 GB
TL16	3.92		RH	6	0184-	1619179)	1	83BG 4234 AB
TL16	3.92		LH	12	-0983	6104062)	1	83BG 4234 HA

TL16	3.92		LH	12	-0983	6104064)	1	83BG 4234 KA
TL16	3.92		LH	12	0983-0184	6135002)	1	83BG 4234 HB
TL16	3.92		LH	12	0983-0184	1619187)	1	83BG 4234 KB
TL16	3.92		LH	1-6	0184-	1619187)	1	83BG 4234 KB
TL16	3.92		LH	1-6	0184-	6135022)	1	83BG 4234 HB
TL16	3.92		LH	6	-0184	1619180	1	83BG 4234 BB
NUMBER OF TEETH								
TL18	3.62	28/26	RH	12		1619186)	1	83BG 4234 GB
TL18	3.62	28/26	RH	12		1619185)	1	83BG 4234 JB
TL18	3.62	28/23	RH	12		1619181)	1	83BG 4234 CB
TL18	3.62	28/23	RH	12		1619183)	1	83GB 4234 EB
TL18	3.62		RH	6		1619179)	1	82BG 4234 AB
TL18	3.62	28/26	LH	12		6135022)	1	83BG 4234 HB
TL18	3.62	28/26	LH	12		1619187)	1	83BG 4234 KB
TL18	3.62	28/23	LH	12		1619182)	1	83BG 4234 DB
TL18	3.62	28/23	LH	12		1619184	1	83BG 4234 FB
TL18	3.62		LH	6		1619180	1	83BG 4234 BB
TL20H	3.38		RH		-0384	1619179	1	83BG 4234 AB
TL20H	3.38		RH	12	0384-	1619186)	1	83BG 4234 JB
TL20H	3.38		RH	12	0384-	1619185)	1	83BG 4234 GB
TL20H	3.38		RH	6	0384-	1619179	1	83BG 4234 AB
TL20H	3.38		LH		-0384	1619180	1	83BG 4234 BB
TL20H	3.38		LH	12	0384-	1619187)	1	83BG 4234 KB
TL20H	3.38		LH	12	0384-	6135022)	1	83BG 4234 HB
TL20H	3.38		LH	6	0384-	1619180	1	83BG 4234 BB
TL20H	3.62		RH			1619179	1	83BG 4234 AB
TL20H	3.62		LH			1619180	1	83BG 4234 BB
TL20INJ	3.38	GL, GHIA	RH	12		1619186)	1	83BG 4234 JB
TL20INJ	3.38	GL, GHIA	RH	12		1619185)	1	83BG 4234 GB
TL20INJ	3.38	GL, GHIA	RH	6		1619179	1	83BG 4234 AB
TL20INJ	3.38	GL, GHIA	LH	12		1619187)	1	83BG 4234 KB
TL20INJ	3.38	GL, GHIA	LH	12		6135022)	1	83BG 4234 HB
TL20INJ	3.38	GL, GHIA	LH	6		1619180	1	83BG 4234 BB
TL20INJ	3.62	GL, GHIA	RH			1619179	1	83BG 4234 AB
TL20INJ	3.62	GL, GHIA	LH			1619180	1	83BG 4234 BB

TL20INJ	3.62	2.0 IS	RH			1619179	1	83BG 4234 AB
TL20INJ	3.62	2.0 IS	LH			1619180	1	83BG 4234 BB
TL20INJ	3.92	2.0 IS	RH			1619179	1	83BG 4234 AB
TL20INJ	3.92	2.0 IS	LH			1619180	1	83BG 4234 BB
TV20	3.38		RH		-0384	1619179	1	83BG 4234 AB
TV20	3.38		RH		0384-	1619186)	1	83BG 4234 JB
TV20	3.38		RH		0384-	1619185)	1	83BG 4234 GB
TV20	3.38		RH		0384-	1619179	1	83BG 4234 AB
TV20	3.38		LH		-0384	1619180	1	83BG 4234 BB
TV20	3.38		LH	12	0384-	6135022)	1	83BG 4234 HB
TV20	3.38		LH	12	0384-	1619187)	1	83BG 4234 KB
TV20	3.38		LH	6	0384-	1619180	1	83BG 4234 BB
TV20	3.62		RH			1619179	1	83BG 4234 AB
TV20	3.62		LH			1619180	1	83BG 4234 BB
TV23	3.14		RH	12		1619179	1	83BG 4234 AB
TV23	3.14		LH			1619180	1	83BG 4234 BB
TV23	3.38		RH			1619179	1	83BG 4234 AB
TV23	3.38		LH			1619180	1	83BG 4234 BB
TV23	3.62		RH	12		1619179	1	83BG 4234 AB
TV23	3.62		LH	12		1619180	1	83BG 4234 BB
TV28INJ	3.14 / 3.36		RH			6131136	1	85BG 4234 AA
TV28INJ	3.14 / 3.36		LH			6131137	1	85BG 4234 BA
TV28INJ	3.62	XR4	RH	4		H) 1619179	1	83BG 4234 AB
TV28INJ	3.62	XR4	LH	4		H) 1619180	1	83BG 4234 BB
PD23	3.14		RH	12		1619179	1	83BG 4234 AB
PD23	3.14		LH	12		1619180	1	83BG 4234 BB
PD23	3.14		RH	6		1619179	1	83BG 4234 AB

	PD23	3.14		LH	6			1619180	1	83BG 4234 BB
4	TV28INJ	3.62		RH				I) 1629459	1	85GG 4234 CA
	TV28INJ	3.62		LH				I) 614 6498	1	85GG 4234 DA
	CL20	3.64		RH				1637570	1	V86BB 4234 AA
	CL20	3.64		LH				1637571	1	V86BB 4234 BA
	LL23INJ		+ "USA", "CDN" XR4	RH	4		D	1629459	1	85GG 4234 CA
	LL23INJ		+ "USA", "CDN" XR4	LH	4		D	6146498	1	85GG 4234 DA
5	<b>SHAFT - (REAR AXLE)</b>									
			+ "USA", "CDN" XR4	RH	4		D	US PART	1	85GG 4235 CA
			+ "USA", "CDN" XR4	LH	4		D	US PART	1	85GG 4234 DA
5A	<b>PLATE SPRING - (REAR AXLE SHAFT)</b>			CL20				1493976	4	E832107 S
6	<b>BOOT</b>									
	TV28INJ							I) 1495776	4	72GG 4697 DA
	CL20							1495776	4	72GG 4697 DA
	+ "USA", "CDN" XR4				4		D	1495776	4	72GG 4697 DA
7	<b>CAP - (PROTECTIVE)</b>									
	TV28INJ							I) 1505915	4	72GG 4K240 AA
	CL20							1495775	4	72GG 4K240 DA
	+ "USA", "CDN" XR4				4		D	1505915	4	72GG 4K240 AA
8	<b>JOINT ASSY - (CONST. VELOC)</b>									
	TV28INJ							I) 1493963	4	72GG 4635 BA
	CL20							1493962	4	72GG 4635 AA
	+ "USA", "CDN" XR4				4		D	1493963	4	72GG 4635 BA
9	<b>PLATE - (LOCKING)</b>									
	TV28INJ							I) 1505914	12	72GG 4A235 BA
	CL20							1493927	12	72GG 4A235 AA
	+ "USA", "CDN" XR4				4		D	1505914	12	72GG 4A235 BA
10	<b>SHAFT - (REAR AXLE)</b>									
	TV28INJ		- "USA", "CDN"	RH				I) 6146631	1	85GB B4365 BC
	TV28INJ		- "USA", "CDN"	LH				I) 6146627	1	85GB 4K137 BC

		+ "USA", "CDN" XR4	RH	4	D	6145278	1	85BB 4365 AA
		+ "USA", "CDN" XR4	LH	4	D	6145276	1	85BB 4K137 AA
		CL20	RH				1	V86BB 4363 AA
		CL20	LH			1637569	1	V86BB 4K137 AA
11	<b>SPRING - (PRESSURE)</b>							
		FOR REAR AXLE SHAFT						
		83BG 4234 GA, HA, JA, KA, CA, DA, FA				6101693	4	83BG 4A191 AA
		83BG 4234 EA		6101694		6101693	4	83BG 4A191 AA
		83BG 4234 GB, HB, JB, KB, CB, DB, EB, FB				6101693	4	83BG 4A191 AA
		83BG 4234 AA				6115123	4	83BG 4A191 BA
		83BG 4234 BA		6091804		6115123	4	83BG 4A191 BA
		83BG 4234 AB, BB				6115123	4	83BG 4A191 BA
		85BG 4234 AA, BA				6160917	4	85BG 4A191 AA
12	<b>WASHER- (THRUST)</b>							
		FOR REAR AXLE SHAFT						
		83BG 4234 GA, HA, JA, KA, CA, DA, FA				6101689	4	83BG 4K070 AA
		83BG 4234 EA		6101694		6101689	4	83BG 4K070 AA
		83BG 4234 GB, HB, JB, KB, CB, DB, EB, FB				6101689	4	83BG 4K070 AA
		83BG 4234 AA, AB, BB				6115120	4	83BG 4K070 BA
		83BG 4234 BA		6091804		6115120	4	83BG 4K070 BA
		85BG 4234 AA, BA				6115120	4	83BG 4K070 BA
13	<b>CIRCLIP</b>							
		FOR REAR AXLE SHAFT						
		83BG 4234 GA, HA, JA, KA, CA, DA, FA				6166679	4	E 860171 S103
		83BG 4234 EA		6101694		6166679	4	E 860171 S103
		83BG 4234 GB, HB, JB, KB, CB, DB, EB, FB				6166679	4	E 860171 S103
		83BG 4234 AA, AB, BB				1497515	4	E 661125 S
		83BG 4234 BA		6101804		1497515	4	E 661125 S
		85BG 4234 AA, BA				1497515	4	E 661125 S
14	<b>CIRCLIP</b>							
		FOR REAR AXLE SHAFT						
		85GG 4234 CA TV28INJ				I) 6166681	4	E 960100 S103
		85GG 4234 DA TV28INJ				I) 6166681	4	E 960100 S103
		85GG 4234 AA + "USA", "CDN" XR4		4	D	6166681	4	E 960100 S103
		78GG 4234 AA + "USA", "CDN" XR4		4	D	6166681	4	E 960100 S103
		V86BB 4234 AA CL20				1493977	4	E 960103 S
		V86BB 4234 BA CL20				1493977	4	E 960103 S
15	<b>SPIDER</b>							
		FOR REAR AXLE SHAFT						
		83BG 4234 GA, HA, JA, KA, CA, DA, FA				6166679	4	E 860171 S103
		83BG 4234 EA		6101694		6166679	4	E 860171 S103



	83BG 4234 GB, HB, JB, KB, CB, DB, EB, FB			6166679	4	E 860171 S103
	83BG 4234 AA, AB, BB			1497515	4	E 661125 S
	83BG 4234 BA	6101804		1497515	4	E 661125 S
	85BG 4234 AA, BA			1497515	4	E 661125 S
16	<b>STOP - (REAR AXLE SHAFT BUMPER)</b>					
	FOR REAR AXLE SHAFT					
	83BG 4234 AA, AB, BB			6115121	4	83BG 4A171 BA
	83BG 4234 BA	6101804		6115121	4	83BG 4A171 BA
	83BG 4234 CA, DA, FA, GA, HA, JA, KA			6101690	4	83BG 4A171 AA
	83BG 4234 CB, DB, EB, FB, GB, HB, JB, KB			6101690	4	83BG 4A171 AA
	83BG 4234 EA	6101694		6101690	4	83BG 4A171 AA
	85BG 4234 AA, BA			6115121	4	83BG 4A171 BA
f17	<b>KIT - (REAR AXLE SHAFT REPAIR)</b>					
	FOR REAR AXLE SHAFT					
	83BG 4234 AA, AB, BB			6127557	4	83BG 4K258 BA
	83BG 4234 BA	6101804		6127557	4	83BG 4K258 BA
	83BG 4234 CA, DA, FA, GA, HA, JA, KA			6127556	4	83BG 4K258 AA
	83BG 4234 CB, DB, EB, FB, GB, HB, JB, KB			6127556	4	83BG 4K258 AA
	83BG 4234 EA	6101694		6127556	4	83BG 4K258 AA
	85BG 4234 AA, BA			6160919	4	85BG 4K258 AA
18	<b>SPLIT - WITH UNIVERSAL JOINT</b>					
	TL13	MANUAL		AB) 6106364	1	83BG 4602 FA
	TL13	MANUAL		D ABE) 1625291	1	R83BG 4602 FA
	CL20			1637643	1	V86BB 4602 BA
19	<b>SPLIT - GIUSO JOINT</b>					
	TL16 -	MANUAL	12	CD) 6121953	1	+2) 1630185
	TL20					
	TL16 -	MANUAL	12	D CDE) 1627094	1	R83BG 4602 KA
	TL20H					
	TL16	MANUAL	-0584	AB) 1613419	1	83BG 4602 NA
	TL16	MANUAL	-0584	D ABE) 1625295	1	+2) 1630194
	TL16	MANUAL	-0584	GB AB) 1630187	1	83BG 4602 NB
	TL16	MANUAL	-0584	ABE) 1630194	1	R83BG 4602 NB
	TL16 -	MANUAL	05-84	AB) 1613419	1	83BG 4602 NA
	TL20H					
	TL16 -	MANUAL	0584-	ABE) 1625295	1	+2) 1630194
	TL20H					
	TL16 -	MANUAL	0584-	AB) 1630187	1	83BG 4602 NB
	TL20H					
	TL16 -	MANUAL	0584-	ABE) 1630194	1	R83BG 4602 NB
	TL20H					
	TL20INJ	MANUAL	GL, GHIA	D) 6121953	1	+2) 1630185
	TL20INJ	MANUAL	GL, GHIA	DE) 1627094	1	R83BG 4602 KA
	TL20INJ	MANUAL	2.0 IS	6121953	1	+2) 1630185

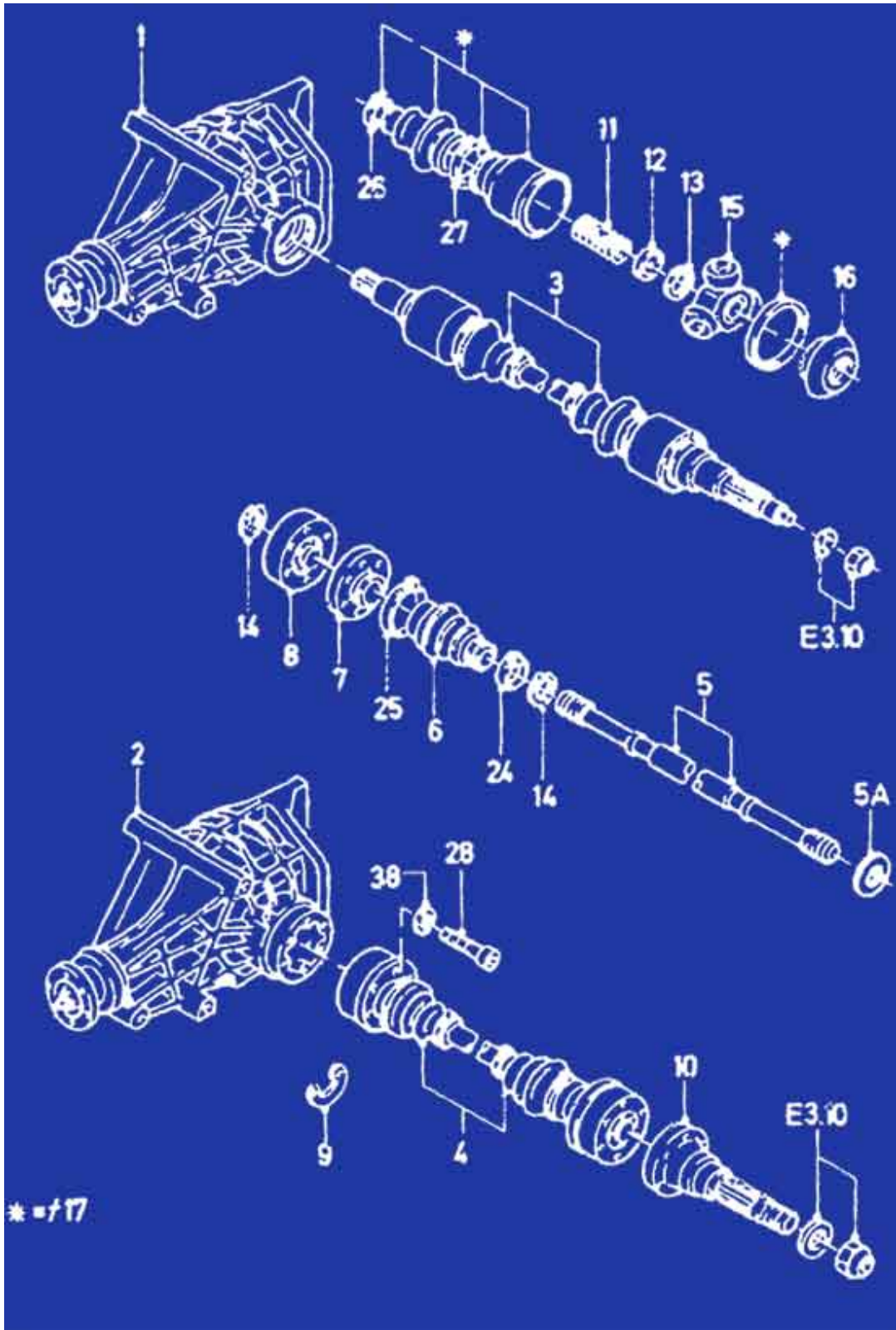
TL20INJ	MANUAL	2.0 IS				D	E) 1627094	1	R83BG 4602 KA
TV20	MANUAL			12			6121953	1	+2) 1630185
TV20	MANUAL			12		D	E) 1627094	1	R83BG 4602 KA
TV23	MANUAL			12			6121953	1	+2) 1630185
TV23	MANUAL			12		D	E) 1627094	1	R83BG 4602 KA
TV28INJ	MANUAL		XR4	4	-0285		H) 6121953	1	+2) 1630185
TV28INJ	MANUAL		XR4	4	-0285	D	EH) 1627094	1	R83BG 4602 KA
TV28INJ	MANUAL			26	0285-		H) 1630185	1	83BG 4602 KB
							(1637456)	MIX	83BG 4602 KC
							(1637925)	MIX	83BG 4602 KD
TV28INJ	MANUAL			26		D	EH) 1630192	1	R83BG 4602 KB
							(1637457)	MIX	R83BG 4602 KC
							(1637926)	MIX	R83BG 4602 KD
TV28INJ	MANUAL		XR4	4			H) 6121953	1	+2) 1630185
TV28INJ	MANUAL		XR4	4			EH) 1627094	1	R83BG 4602 KA
TV28INJ	MANUAL			12			I) 1630706	1	V85BB 4602 BA
							(1637148)	MIX	V85BB 4602 BB
TV28INJ	MANUAL			12		D	EI) 1630707	1	RV85BB 4602 BA
							(1637146)	MIX	RV85BB 4602 BB
TV28INJ				6			I) 1643942	1	V85BB 4602 BC
TV28INJ				6			EI) 1643945	1	R85BB 4602 BC
TL	MANUAL			6			CD) 6121953	1	+2) 1630185
TL	MANUAL			6		D	CDE) 1627094	1	R83BG 4602 KA
TV	MANUAL			6			6121953	1	+2) 1630185
TV	MANUAL			6		D	E) 1627094	1	R83BG 4602 KA
PD23	MANUAL			12			6118363	1	83BG 4602 HA
PD23	MANUAL			12		D	E) 1625293	1	R83 BG 4602 HA
PD23	MANUAL			6			6121954	1	+2) 1630186
PD23	MANUAL			6		D	E) 1625294	1	+2) 1630193
PD23	MANUAL			6			1630186	1	83BG 4602 LB
PD23	MANUAL			6		D	E) 1630193	1	R83BG 4602 LB
	AUTOMATIC						F) 6097518	1	83BG 4602 CA
	AUTOMATIC						EF) 1625290	1	R83BG 4602 CA
TL	AUTOMATIC						G) 6138792	1	84BG 4602 AA
TV20, TV23	AUTOMATIC			12			G) 6138792	1	84BG 4602 AA
TV20, TV23	AUTOMATIC			6			G) 6138792	1	84BG 4602 AA
TV28INJ	AUTOMATIC		"S", "CH"	26	0585-		6154483	1	85BG 4602 CA

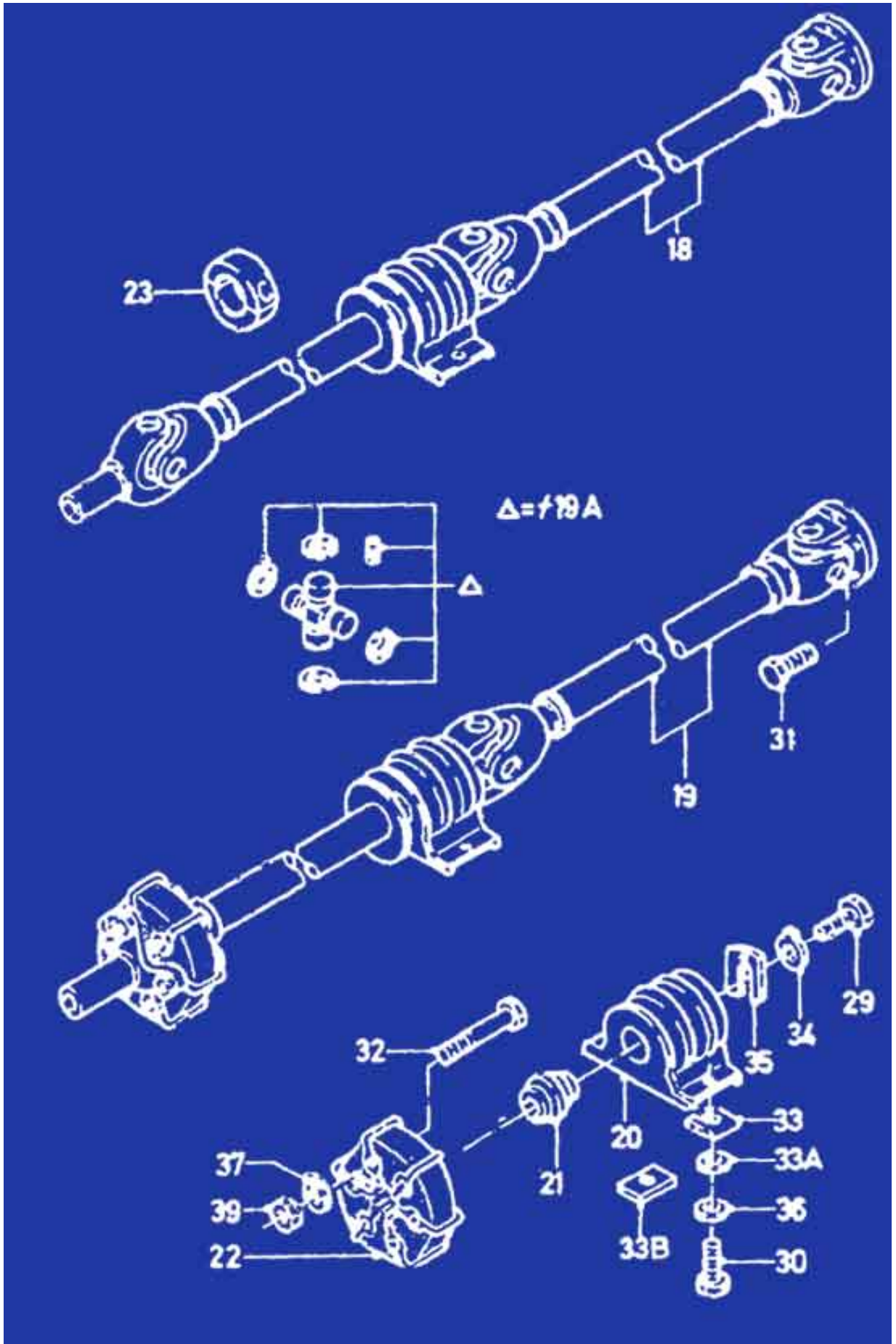
	TV28INJ	AUTOMATIC	"S", "CH"	26	0585-	D	E) 1634197	1	R85BG 4602 CA	
	LL23INJ	MANUAL	XR4	4	0285-	D	6131138	1	85BG 4602 AA	
	LL23INJ	MANUAL	XR4	4	0285-	D	6147388	1	85BG 4602 AB	
							(1637462)	MIX	85BG 4602 AC	
	LL23INJ	MANUAL	XR4	4		D	E) 1630198	1	R85BG 4602 AB	
	LL23INJ	AUTOMATIC	XR4	4	-0285	D	6131197	1	85BG 4602 BA	
	LL23INJ	AUTOMATIC	XR4	4	0285-	D	6147389	1	85BG 4602 BB	
							(1637463)	MIX	85BG 4602 BC	
	LL23INJ	AUTOMATIC	XR4	4		D	E) 1630199	1	R85BG 4602 BC	
f19A	<b>KIT - (UNIVERSAL JOINT REPAIR)</b>							I) 1630066	2	V85BB 4635 AA
20	<b>BEARING ASSY - (DRIVE SHAFT COUPLING SHAFT)</b>									
		-"USA", "CDN"	-CL20				1613023	1	83BG 4826 AB	
		+"USA", "CDN"	XR4	4		D	6131140	1	85GB 4826 AA	
21	<b>BEARING ASSY - (BALL)</b>									
		-"USA", "CDN"	-CL20				1613022	1	83BG 4812 AA	
		+"USA", "CDN"	XR4	4		D	6131139	1	85BG 4812 AA	
22	<b>COUPLING ASSY - (DRIVE SHAFT)</b>									
	TV28INJ	MANUAL	XR4	4		GB	1515117	1	72GG 4684 BA	
	TV28INJ	MANUAL	XR4	4		D	1515117	1	+2) 1638947	
	TV28INJ	MANUAL	XR4	4		D	1638947	1	83BG 4684 BA	
	TV, PD23	MANUAL		6		GB	1515117	1	72GG 4684 BA	
	TV, PD23	MANUAL		6		D	1515117	1	+2) 1638947	
	TV, PD23	MANUAL		6		D	1638947	1	83BG 4684 BA	
	TL	MANUAL		6		GB	BC) 1515117	1	72GG 4684 BA	
	TL	MANUAL		6		D	BC) 1515117	1	+2) 1638947	
	TL	MANUAL		6		D	BC) 1638947	1	83BG 4684 BA	
23	<b>DAMPER - (DRIVE SHAFT)</b>							AB) 1565515	1	75GG 4980 AA
				12			I) 1643606	1	V85BB 4980 AA	
24	<b>STRAP - (BOOT RETAINING)</b>									
	TV28INJ		∅ = 33MM				I) 6145521	4	E863118 S100	
	CL20		∅ = 33MM				6145520	4	E863117 S100	
	LL23INJ	+"USA", "CDN"	XR4			D	6145521	4	E863118 S100	
25	<b>STRAP - (BOOT RETAINING)</b>									

	TV28INJ		Ø = 72MM			6145523	4	E863119 S100	
	CL20		Ø = 72MM			6145523	4	E863119 S100	
	LL23INJ	+"USA", "CDN"	XR4			6145523	4	E863119 S100	
26	<b>FOR REAR AXLE SHAFT</b>								
	83BG 4234	CA, DA, FA, GA, HA, JA, KA				0466221	4	11 466221	
	83BG 4234	EA	6101694			0466221	4	11 466221	
	83BG 4234	CB,DB, EB, FB, GB, HB, JB, KB				0466221	4	11 466221	
	83BG 4234	AA, AB, BB				6145521	4	E 8631118 S100	
	83BG 4234	BA	6091804			6145521	4	E 8631118 S100	
	83BG 4234	AA, BA				6145521	4	E 8631118 S100	
27	83BG 4234	CA, DA, FA, GA, HA, JA, KA				6114600	4	83BG 4K188 CA	
	83BG 4234	EA	6101694			6114600	4	83BG 4K188 CA	
	83BG 4234	CB, DB, EB, FB, GB, HB, JB, KB				6114600	4	83BG 4K188 CA	
	83BG 4234	AA, AB, BB				6145516	4	E 863113 S100	
	83BG 4234	BA	6091804			6145516	4	E 863113 S100	
	85BG 4234	AA, BA				6145517	4	E 863113 S100	
	85BG 4234	AA, BA				6115122	4	83BG 4K188 DA	
28	<b>SCREW - (SOCKET HEAD CAP)</b>								
	TV28INJ					I) 6130713	24	E 804339 S	
	CL20					1638233	24	E 802640 S200	
	+"USA", "CDN"	XR4		4	D	6130713	24	E 804339 S	
	<b>BOLT - (HEX HEAD)</b>								
29		-CL20	M10x1x25			1436053	1	20389 GS40	
30			M6x25			1461203	2	E 602353 S72	
31			M10x1x18			6118344	4	E 800359 S200	
32		-CL20	M12x80			1515115	6	E 600421 S72	
		-"USA", "CDN"	M12x65			H) 1484421	6	E 600418 S72	
			M12x65	12		I) 1484421	3	E 600418 S72	
			M12x90	6		I) 1484421	3	E 600422 S72	
33	<b>SHIM</b>								
					-0483	GB	6002543	2	72GG 4A209 AA
					-0483	D	6002543	2	72GG 4A209 AA
33A			8.4x25x4		0483-	GB	1488478	2	E 630030 S71

33B		CL20	8.4x25x4	0283-	D	1488478	2	E 630030 S71
						1643685	2	V86BB 4A209 AA
34	<b>PLATE - (LOCKING)</b>							
		-CL20				0440562	1	11440562
35	<b>WASHER - (SPECIAL)</b>							
		-CL20				0440570	1	11440570
	<b>WASHER - (FLAT)</b>							
36			8.4x22x4			1465378	2	E 630029 S71
37		-CL20	12x23x3			1515114	6	E 830125 S72
38		CL20				1617358	24	E 630174 S71M
39	<b>NUT - (HEX SELF-LOCKING)</b>							
		-CL20	M12			1536468	6	E 620435 S72







## Ford Sierra (DD1) 07/92 1/1

*NB. This microfiche was converted automatically, although I have made an effort to validate the data, sometimes mistakes are hard to spot.*

### C01.10 - REAR AXLE DIFF & CARR. / DRIVE SHAFT

#### Finis No

REAR AXLE DIFF & CARR./DRIVE SHAFT

A) USE ONLY WITH ANTI-LOCK BRACKING SYSTEM

B) EXCEPT ANTI-LOCK BRAKING SYSTEM

FOR TRANSMISSION

C) TYPE E - - MEDIUM SERIES WITH SHORT GEAR CHANGE LEVER / GERMAN DESIGN (4 SPEED)

D) TYPE 9 - 5 SPEED

E) TYPE 3 - MEDIUM SERIES WITH SHORT GEAR CHANGE LEVER / BRITISH DESIGN (4 SPEED)

F) TYPE N - MT75 (4 SPEED)

G) TYPE 8 - MT75 (5 SPEED)

H) ALTERNATIVE WITH TL16 AND TL18 ONLY

I) ONLY FOR BUSINESS CARS FOR NORMAL ROAD CONDITIONS

K) USE ONLY WITH FOUR WHEEL SYSTEM

L) EXCEPT FOUR-WHEEL DRIVE

M) USE ONLY ON VEHICLES WITH EXTENDED WHEELBASE

N) WITH LIMITED SLIP DIFFERENTIAL

P) USE ONLY WITH DISC BRAKE

\* EXCHANGE UNIT

III. Ref.	PART NAME	MOD	MOD YEAR	PROD	FINIS NO.	QTY	PART NUMBER
1	DIFFERENTIAL, CARRIER AND EXTENSION						
	3.14 TL20H (+)"F"				B) 6107624	1	83BG 4006 KC
	3.14 DL20 (+)"F"				B) 6107624	1	83BG 4006 KC
	3.14 PD23		-0190		B) 6107624	1	83BG 4006 KC
	3.38 TL18 (+)"F"	124			B) 6107625		83BG 4006 LC
	3.38 HL18		0190-	D	6107625	1	83BG 4006 LC
	3.38 TL20H	124			B) 6107625		83BG 4006 LC
	3.38 PD23	124	-0190		B) 6107625	1	83BG 4006 LC
	3.38 TL20	6			B) 6107625	1	83BG 4006 LC
	3.38 PD23	6			B) 6107625	1	83BG 4006 LC
	3.38 D18T		0190-		6107625	1	83BG 4006 LC
							NUMBER OF TEETH
	3.62 TL16	23	124		BH) 6157715	1	83BG 4006 CD
	3.62 TL16	26	124		BH) 6107626	1	83BG 4006 MC
	3.62 TL18 MANUAL	26	124		BH) 6157715	1	83BG 4006 CD
	3.62 TL18 MANUAL	28	624		BH) 6107626	1	83BG 4006 MC
	3.62 TL18 AUTOMATIC		124		B) 6157715	1	83BG 4006 CD
	3.62 TL20		124	-0190	B) 6107626	1	83BG 4006 MC
	3.62 DL20		124	-0190	B) 6107626	1	83BG 4006 MC
	3.62 DL20			-0190	A) 6146560	1	85BG 4006 BC
	3.62 TL18	6			6107626	1	83BG 4006 MC
	3.62 HL18	6			B) 6107626	1	83BG 4006 MC
	3.62 TL20	6	-0190		B) 6107626	1	83BG 4006 MC
	3.62 DL20	6	-0190		B) 6107626	1	83BG 4006 MC
	3.62 D18T		0190-		B) 6107626	1	83BG 4006 MC
	3.62 TL20		0190-		B) 6107626	1	83BG 4006 MC
	3.62 DL20		0190-		BP) 6107626	1	83BG 4006 MC
	3.92 TL16	6			B) 1627164	1	83BG 4006 JD

	3.92	TL16			B) 1627164	1	83BG 4006 JD
	3.92	HL18			B) 1627164	1	83BG 4006 JD
	3.92	TL20	124	-0190	B) 1627164	1	83BG 4006 JD
	3.92	TL20		0190-	BL) 1627164	1	83BG 4006 JD
	3.92	DL20	1-6	-1090	B) 6187031	1	88BG 4006 DA
	3.92	DL20	1-6	1090-0591	BG) 6490064	1	89BG 4006 AA
	3.92	DL20	1-6	0591-	BGR) 6663904	1	91BG 4006 AA
2	3.14	TL20H (+)"F"			A) 6152100	1	87BG 4006 GB
	3.14	DL20 (+)"F"			A) 6152100	1	87BG 4006 BA
	3.14	TV28INJ (+)"S"		-0190	1644899	1	85GG 4006 GB
	3.14	PD23		-0190	A) 6152100	1	87BG 4006 BA
	3.14				N) 1648395	1	V87BG 4006 DAA
	3.36	TV28 (+)"S"		-0190	6124451	1	85GG 4006 FB
	3.36	TV29		-0591	6124451	1	85BB 4006 FB
	3.36	TV29		0591-	6663908	1	91GG 4006 FA
	3.36	TV29		0190-0591	N) 6142222	1	85GG 4006 AAA
	3.36	TV29		0591-	LN) 6663905	1	91GG 4006 AAA
	3.38	TL18	124		A) 1630004	1	85GG 4006 AC
	3.38	HL18		0889-	R) 1630004	1	85GG 4006 AC
	3.38	TL20			A) 1630004	1	85GG 4006 AC
	3.38	PD23			A) 1630004	1	85GG 4006 AC
	3.38	PD23	6	-0290	BJ) 1630004	1	85GG 4006 AC
	3.38				N) 1648394	1	V87BG 4006 CAA
	3.62	TL16	124		A) 6146560	1	85GG 4006 BC
	3.62	TL18			A) 6146560	1	85GG 4006 BC
	3.62	TL20			A) 6146560	1	85GG 4006 BC
	3.62	DL20			6146560	1	85GG 4006 BC
	3.62	DL20, TV29		0190-	N) 1648393	1	V87BG 4006 BAA
	3.62	CH20		0290-	K) 1627946	1	V85BB 4006 AA
	3.62	D18T			K) 1627946	1	V85BB 4006 AA
	3.62	DL20			LN) 1648393	1	V87BG 4006 BAA
	3.62	DL20			A) 6146560	1	85GG 4006 BC
	3.62	DL20			BR) 6146560	1	85GG 4006 BC
	3.64	CH20		-0190	N) 1	1	V86BB 4006 AAA
	3.92	TL16			A) 6146561		85GG 4006 DC
	3.92	TL18	124		A) 6146561		85GG 4006 DC
	3.92	HL18	124		A) 6146561		85GG 4006 DC
	3.92	DL20	124	-1090	A) 6187033		+2) 6490065
	3.91	DL20	124	1090-	AG) 6490065		89GG 4006 AA

3.91	DL20			124	0591-		AG) 6663909	91GG 4006 GA	
3.91	DL20				0190-0591		G) 6490066	89GG 4006 AAA	
3.91	DL20				0591-		GN) 6663906	91GG 4006 ABA	
3.92	TL20INJ						A) 6146561	85GG 4006 DC	
3.92	TL16			6			A) 6146561	85GG 4006 DC	
3.92	HL18			6			A) 6146561	85GG 4006 DC	
3.92	DL20			6	-1090		A) 6187033	+2) 6490065	
3.91	DL20			6	1090-		AG) 6490065	89GG 4006 AA	
3.91	DL20			6	0591-		AG) 6663909	91GG 4006 GA	
3.92	DL20			1-6	0190-		K) 6171465	86GG 4006 AAA	
3	<b>SHAFT AND CV JOINT ASSY - RR AXLE</b>								
	NUMBER OF TEETH								
TL16	3.62	28/23	RH	124		D	BH) 1619181	1	83BG 4234 CB
TL16	3.62	28/23	RH	124	-0292		*BH) 5018700	1	R83BG 4234 EB
TL16	3.62	28/23	RH	124	-0292		BH) 1619181	1	83BG 4234 EB
TL16	3.62	28/23	RH	124	-0292		*BH) 5018700	1	R83BG 4234 EB
TL16	3.62	28/26	RH	124	-0292		*BH) 5018702	1	R83BG 4234 JB
TL16	3.62	28/26	RH	124	-0292		BH) 1615186	1	83BG 4234 JB
TL16	3.62	28/26	RH	124	-0691		*BH) 5018702	1	R83BG 4234 JB
TL16	3.62		RH		0691-		B) 6476504	1	89BG 4234 JA
TL16	3.62		RH		0292-		*B) 1664054	1	R89BG 4234 JA
TL16	3.92		RH	6	-0292		*B) 5018702	1	R83BG 4234 JB
TL16	3.92		RH	6	-0292		B) 1619186	1	83BG 4234 JB
TL16	3.92		RH	6	-0292		*B) 5018702	1	R83BG 4234 JB
TL16	3.92		RH		0691-		B) 6476504	1	89BG 4234 JA
TL16	3.92		RH		0292-		*B) 1664054	1	R89BG 4234 JA
TL18	3.38	(+)F"	RH	124	-0588		*B) 5018702	1	R83BG 4234 JB
TL18	3.38	(+)F"	RH	124	-0588		B) 1619186	1	83BG 4234 JB
TL18	3.38	(+)F"	RH	124	-0588		*B) 5018702	1	R83BG 4234 JB
TL18	3.38	(+)F"	RH		0588-0292		B) 1619186	1	83BG 4234 JB
TL18	3.38	(+)F"	RH		0588-0292		*B) 5018702	1	R83BG 4234 JB
TL18	3.38		RH		0691-		B) 6476504	1	89BG 4234 JA
TL18	3.38		RH		0292-		*B) 1664054	1	R89BG 4234 JA
TL18	3.62	28/23 MANUAL	RH	124		D	BH) 1619181	1	83BG 4234 CB
TL18	3.62	28/23 MANUAL	RH	124	-0292		*BH) 5018700	1	R83BG 4234 EB
TL18	3.62	28/23 MANUAL	RH	124	-0292		BH) 1619183	1	83BG 4234 EB
TL18	3.62	28/23 MANUAL	RH	124	-0292		*BH) 5018700	1	R83BG 4234 EB
TL18	3.62	28/26	RH	124	-0292		BH) 1619186	1	R83BG 4234 JB

TL18	3.62	MANUAL 28/26 MANUAL	RH	124	-0292	*B) 5018702	1	R83BG 4234 JB
TL18	3.62	AUTOMATIC	RH	124		B) 1619181	1	83BG 4234 CB
TL18	3.62	AUTOMATIC	RH	124	-0292	*B) 5018700	1	R83BG 4234 EB
TL18	3.62	AUTOMATIC	RH	124	-0292	B) 1619183	1	83BG 4234 EB
TL18	3.62	AUTOMATIC	RH	124	-0292	*B) 5018700	1	R83BG 4234 EB
TL18	3.62		RH	6	-0588	B) 1619179	1	83BG 4234 AB
TL18	3.62		RH	6	-0588	*B) 5018704	1	R83BG 4234 AB
TL18	3.62		RH	6	0588-0292	B) 1619186	1	83BG 4234 JB
TL18	3.62		RH	6	0588-0691	*B) 5018702	1	R83BG 4234 JB
TL18	3.62		RH		0691-	B) 6476504	1	89BG 4234 JA
TL18	3.62		RH		0292-	*B) 1664054	1	R89BG 4234 JA
TL18	3.92		RH	124	-0292	*B) 5018702	1	R83BG 4234 JB
TL18	3.92		RH	124	-0292	B) 1619186	1	83BG 4234 JB
TL18	3.92		RH	124	-0691	*B) 5018702	1	R83BG 4234 JB
TL18	3.92		RH		0691-	B) 6476504	1	89BG 4234 JA
TL18	3.92		RH		0292-	*B) 1664054	1	R89BG 4234 JA
HL18	3.92		RH	124		B) 1619185	1	83BG 4234 GB
HL18	3.92		RH	124	-0292	*B) 5018702	1	R83BG 4234 JB
HL18	3.92		RH	124	-0691	*B) 5018704	1	R83BG 4234 AB
HL18	3.92		RH		0691-	B) 6476504	1	89BG 4234 JA
HL18	3.92		RH		0292-	*B) 1664054	1	R89BG 4234 JA
HL18	3.62		RH	6	-0588	B) 1619179	1	83BG 4234 AB
HL18	3.62		RH	6	-0588	*B) 5018704	1	R83BG 4234 JB
HL18	3.62		RH	6	0588-0292	B) 1619186	1	R83BG 4234 AB
HL18	3.62		RH	6	0588-0691	*B) 5018702	1	R83BG 4234 JB
HL18	3.62		RH		0691-	B) 6476504	1	89BG 4234 JA
HL18	3.62		RH		0292-	*B) 1664054	1	R89BG 4234 JA
TL20H	3.14	(+)"F"	RH	124	-0292	B) 1619186	1	83BG 4234 JB
TL20H	3.14	(+)"F"	RH	124	-0292	*B) 5018702	1	R83BG 4234 JB
TL20H	3.38		RH	124	-0292	*B) 5018702	1	R83BG 4234 JB
TL20H	3.38		RH	124	-0292	B) 1619186	1	83BG 4234 JB
TL20H	3.38		RH	124	-0292	*B) 5018702	1	R83BG 4234 JB
TL20H	3.14	(+)"F"	RH	6	-0292	B) 1619186	1	83BG 4234 AB
TL20H	3.14	(+)"F"	RH	6	-0292	*B) 5018702	1	R83BG 4234 AB
DL20H	3.14	(+)"F"	RH	1-6	-0290	B) 1619179	1	83BG 4234 AB
DL20H	3.14		RH	1-6	0290-	BL)1618179	1	83BG 4234 AB

DL20H	3.14	RH	124	0691-	BL) 6476504	1	89BG 4234 JA
DL20H	3.14	RH	124	0292-	*BL) 1664054	1	R89BG 4234 JA
TL20	3.38	RH	6	-0292	B) 1619179	1	83BG 4234 AB
TL20	3.38	RH	6	-0292	*B) 5018704	1	R83BG 4234 AB
TL20H	3.62	RH	124	-0292	*B) 5018704	1	R83BG 4234 JB
TL20H	3.62	RH	124	-0292	B) 1619186	1	83BG 4234 JB
TL20H	3.62	RH	124	-0292	*B) 5018704	1	R83BG 4234 JB
TL20INJ	3.62	RH	124	-0292	B) 1619179	1	83BG 4234 AB
TL20INJ	3.62	RH	124	-0691	*B) 5018704	1	R83BG 4234 AB
TL20INJ	3.62	RH		0691-	B) 6476504	1	89BG 4234 JA
TL20INJ	3.62	RH		0292-	*B) 1664054	1	R89BG 4234 JA
TL20	3.62	RH	6	-0292	B) 1619179	1	83BG 4234 AB
TL20	3.62	RH	6	-0292	*B) 5018704	1	R83BG 4234 AB
DL20	3.62	RH	1-6	-0190	B) 1619179	1	83BG 4234 AB
DL20	3.62	RH	1-6	0190-	BL) 1619179	1	83BG 4234 AB
DL20	3.62	RH	1-6	-0190	*B) 5018704	1	R83BG 4234 AB
DL20	3.62	RH	1-6	0190-0691	*BL) 5018704	1	R83BG 4234 AB
DL20	3.62	RH	124	0691-	BL) 6476504	1	89BG 4234 JA
DL20	3.62	RH	124	0292-	*BL) 1664054	1	R89BG 4234 JA
TL20INJ	3.92	RH	124	-0292	B) 1619179	1	83BG 4234 AB
TL20INJ	3.92	RH	124	-0292	*B) 5018704	1	R83BG 4234 AB
TL20INJ	3.92	RH	6	-0292	B) 1619179	1	83BG 4234 AB
TL20INJ	3.92	RH	6	-0691	*B) 5018704	1	R83BG 4234 AB
TL20INJ	3.92	RH		0691-	B) 6476504	1	89BG 4234 JA
TL20INJ	3.92	RH		0292-	*B) 1664054	1	R89BG 4234 JA
DL20	3.92	RH	1-6		B) 6131136	1	85BG 4234 AA
DL20	3.92	RH	1-6		*B) 5010706	1	R85BG 4234 AA
PD23	3.38	RH	124	-0588	B)1619179	1	83BG 4234 AB
PD23	3.38	RH	124	-0588	*B) 5010704	1	R83BG 4234 AB
PD23	3.38	RH	124	0588-0190	B) 1619186	1	83BG 4234 JB
PD23	3.38	RH	124	0588-0190	*B) 5018702	1	R83BG 4234 JB
PD23	3.38	RH	6	-0190	B) 1619179	1	83BG 4234 AB
PD23	3.38	RH	6	-0190	*B) 5018704	1	R83BG 4234 AB
TL16 / TL20EFI / HL16-18 / D18T		RH		0292-	B) 6476506	1	89BG 4234 LA
TL16 / TL20EFI / HL16-18 / D18T		RH		-0190	B) 6200066	1	89BG 4234 GA
TL16 / TL20EFI / HL16-18 / D18T		RH		0292-	*B) 1664053	1	R89BG 4234 LA
DL20	2WD	RH	124	0292-	BR) 6476506	1	89BG 4234 LA

DL20	2WD			RH	124	0292-		*BR) 1664053	1	R89BG 4234 LA
TL16 / TL20EFI / HL16-18 / D18T				RH		0292-		A) 6476508	1	89BG 4234 NA
TL16 / TL20EFI / HL16-18 / D18T				RH		0292-		*A) 1664057	1	R89BG 4234 NA
DL20	2WD			RH	124	0292-		A) 6476508	1	89BG 4234 NA
DL20	2WD			RH	124	0292-		*A) 1664057	1	R89BG 4234 NA
NUMBER OF TEETH										
TL16	3.62	28/23		LH	124	-0292		*BH) 5018701	1	R83BG 4234 FB
TL16	3.62	28/223		LH	124	-0292		BH) 1619184	1	83BG 4234 FB
TL16	3.62	28/23		LH	124	-0292		*BH) 5018701	1	R83BG 4234 FB
TL16	3.62	28/26		LH	124		D	B) 6135022	1	83BG 4234 HB
TL16	3.62	28/26		LH	124	-0292		*BH) 5018703	1	R83BG 4234 KB
TL16	3.62	28/26		LH	124	-0292		BH) 1619187	1	83BG 4234 KB
TL16	3.62	28/26		LH	124	-0691		*BH) 5018703	1	R83BG 4234 KB
TL16	3.62			LH		0691-		B) 6476505	1	89BG 4234 KA
TL16	3.62			LH		0292-		*B) 1664056	1	R89BG 4234 KA
TL16	3.92			LH	6		D	B) 6135022	1	83BG 4234 HB
TL16	3.92			LH	6	-0292		*B) 5018703	1	R83BG 4234 KB
TL16	3.92			LH	6	-0292		B) 1619187	1	83BG 4234 KB
TL16	3.92			LH	6	-0691		*B) 5018703	1	R83BG 4234 KB
TL16	3.92			LH		0691-		B) 6476505	1	89BG 4234 KA
TL16	3.92			LH		0292-		*B) 1664056	1	R89BG 4234 KA
TL18	3.38			LH	124	-0588		B) 6135022	1	83BG 4234 HB
TL18	3.38			LH	124	-0588		*B) 5018703	1	R83BG 4234 KB
TL18	3.38			LH	124	-0588		B) 1619187	1	83BG 4234 KB
TL18	3.38			LH	124	-0588		*B) 5018703	1	R83BG 4234 KB
TL18	3.38			LH		0588-0292		B) 1619187	1	83BG 4234 KB
TL18	3.38			LH		0588-0691		*B) 5018703	1	R83BG 4234 KB
TL18	3.38			LH		0691-		B) 6476505	1	89BG 4234 KA
TL18	3.38			LH		0292-		*B) 1664056	1	R89BG 4234 KA
TL18	3.62	23/26	MANUAL	LH	124	-0292		*BH) 5018701	1	R83BG 4234 FB
TL18	3.62	23/26	MANUAL	LH	124	-0292		BH) 1619184	1	83BG 4234 FB
TL18	3.62	23/26	MANUAL	LH	124	-0292		*BH) 5018701	1	R83BG 4234 FB
TL18	3.62	28/26	MANUAL	LH	124		D	BH) 6135022	1	83BG 4234 HB
TL18	3.62	28/26	MANUAL	LH	124	-0292		*BH) 5018703	1	R83BG 4234 KB
TL18	3.62	28/26	MANUAL	LH	124	-0292		BH) 1619187	1	83BG 4234 KB
TL18	3.62	28/26	MANUAL	LH	124	-0292		*BH) 5018703	1	R83BG 4234 KB
TL18	3.62		AUTOMATIC	LH	124	-0292		*B) 5018701	1	83BG 4234 FB
TL18	3.62		AUTOMATIC	LH	124	-0292		B) 1619184	1	R83BG 4234 FB
TL18	3.62		AUTOMATIC	LH	124	-0292		*B) 5018701	1	83BG 4234 BB
TL18	3.62			LH	6	-0588		B) 1619180	1	R83BG 4234 BB



TL18	3.62		LH	6	-0588		*B) 5018705	1	83BG 4234 KB
TL18	3.62		LH		0588-0292		B) 1619187	1	R83BG 4234 KB
TL18	3.62		LH		0588-0691		*B) 5018703	1	89BG 4234 KA
TL18	3.62		LH		0691-		B) 6476505	1	R89BG 4234 KA
TL18	3.62		LH		0292-		*B) 1664056	1	83BG 4234
TL18	3.92		LH	124		D	B) 6135022	1	83BG 4234 HB
TL18	3.92		LH	124	-0292		*B) 5018703	1	R83BG 4234 KB
TL18	3.92		LH	124	-0292		B) 1619187	1	83BG 4234 KB
TL18	3.92		LH	124	-0691		*B) 5018703	1	R83BG 4234 BB
TL18	3.92		LH		0691-		B) 6476505	1	89BG 4234 KA
TL18	3.92		LH		0292-		*B) 1664056	1	R89BG 4234 KA
HL18	3.92		LH	124		D	B) 6135022	1	83BG 4234 HB
HL18	3.92		LH	124	-0292		B) 1619187	1	R83BG 4234 KB
HL18	3.92		LH	124	-0292		*B) 5018703	1	83BG 4234 KB
HL18	3.92		LH	124	-0691		*B) 5018705	1	R83BG 4234 BB
HL18	3.92		LH		0691-		B) 6476505	1	89BG 4234 KA
HL18	3.92		LH		0292-		*B) 1664056	1	R89BG 4234 KA
HL18	3.62		LH	6	-0588		B) 1619180	1	83BG 4234 BB
HL18	3.62		LH	6	-0588		*B) 5018705	1	R83BG 4234 BB
HL18	3.62		LH	6	0588-0292		B) 1619187	1	83BG 4234 KB
HL18	3.62		LH	6	0588-0691		*B) 5018703	1	R83BG 4234 KB
HL18	3.62		LH		0691-		B) 6476505	1	89BG 4234 KA
HL18	3.62		LH		0292-		*B) 1664056	1	R89BG 4234 KA
TL20H	3.14	(+)F"	LH	124	-0292		B) 1619187	1	83BG 4234 KB
TL20H	3.14	(+)F"	LH	124		D	B) 6135022	1	83BG 4234 HB
TL20H	3.14	(+)F"	LH	124	-0292		*B) 5018703	1	R83BG 4234 KB
TL20H	3.38		LH	124		D	B) 6135022	1	83BG 4234 HB
TL20H	3.38		LH	124	-0292		*B) 5018703	1	R83BG 4234 KB
TL20H	3.38		LH	124	-0292		B) 1619187	1	83BG 4234 KB
TL20H	3.38		LH	124	-0292		*B) 5018703	1	R83BG 4234 KB
TL20H	3.14	(+)F"	LH	6	-0292		B) 1619180	1	83BG 4234 BB
TL20H	3.14	(+)F"	LH	6	-0292		*B) 5018705	1	R83BG 4234 BB
DL20	3.14	(+)F"	LH	1-6	-0290		B) 1619180	1	83BG 4234 BB
DL20	3.14		LH	1-6	0290-		BL) 1619180	1	R83BG 4234 BB
TL20H	3.38		LH	6	-0292		B) 1619180	1	83BG 4234 BB
TL20H	3.38		LH	6	-0292		*B) 5018705	1	83BG 4234 BB

TL20H	3.62	LH	124		D	B) 6135022	1	83BG 4234 HB
TL20H	3.62	LH	124	-0292		*B) 5018703	1	R83BG 4234 KB
TL20H	3.62	LH	124	-0292		B) 1619187	1	83BG 4234 KB
TL20H	3.62	LH	124	-0292		*B) 5018703	1	R83BG 4234 KB
TL20INJ	3.62	LH	124	-0292		B) 1619180	1	83BG 4234 BB
TL20INJ	3.62	LH	124	-0691		*B) 5018705	1	R83BG 4234 BB
TL20INJ	3.62	LH		0691-		B) 6476505	1	83BG 4234 KA
TL20INJ	3.62	LH		0292-		*B) 1664056	1	R89BG 4234 KA
TL20	3.62	LH	6	-0292		B) 1619180	1	83BG 4234 BB
TL20	3.62	LH	6	-0292		*B) 5018705	1	R83BG 4234 BB
DL20	3.62	LH	1-6	-0190		B) 1619180	1	83BG 4234 BB
DL20	3.62	LH	1-6	0190-		BL) 1619180	1	83BG 4234 BB
DL20	3.62	LH	1-6	-0190		*B) 5018705	1	R83BG 4234 BB
DL20	3.62	LH	1-6	0190-0691		*BL) 5018705	1	R83BG 4234 BB
DL20	3.62	LH	124	0691-		BL) 6476505	1	83BG 4234 KA
DL20	3.62	LH	124	0292-		*BL) 1664056	1	R83BG 4234 KA
TL20INJ	3.92	LH	124	-0292		B) 1619180	1	83BG 4234 BB
TL20INJ	3.92	LH	124	-0292		*B) 5018705	1	R83BG 4234 BB
TL20INJ	3.92	LH	6	-0292		B) 1619180	1	83BG 4234 BB
TL20INJ	3.92	LH	6	-0691		*B) 5018705	1	R83BG 4234 BB
TL20INJ	3.92	LH		0691-		B) 6476505	1	89BG 4234 KA
TL20INJ	3.92	LH		0292-		*B) 1664056	1	R89BG 4234 KA
DL20	3.92	LH	1-6				1	85BG 4234 BA
DL20	3.92	LH	1-6	-0691			1	85BG 4234 BA
DL20	3.92	LH	124	0691-		BL) 6476505	1	89BG 4234 KA
DL20	3.92	LH	124	0292-		*BL) 1664056	1	R89BG 4234 KA
PD23	3.38	LH	124	-0588		B) 1619180	1	83BG 4234 BB
PD23	3.38	LH	124	-0588		*B) 5018705	1	R83BG 4234 BB
PD23	3.38	LH	124	0588-0190		B) 1619187	1	83BG 4234 KB
PD23	3.38	LH	124	0588-0190		*B) 5018703	1	R83BG 4234 KB
PD23	3.38	LH	6	-0190		B) 1619180	1	83BG 4234 BB
PD23	3.38	LH	6	-0190		*B) 5018705	1	R83BG 4234 BB
TL16 / TL20EFI / HL16-18 / D18T		LH		0292-		B) 6476507	1	89BG 4234 MA
TL16 / TL20EFI / HL16-18 / D18T		LH		0190-		B) 6200067	1	89BG 4234 HA
TL16 / TL20EFI / HL16-18 / D18T		LH		0292-		*B) 1664055	1	R89BG 4234 MA
DL20		2WD	LH	124	0292-	BR) 6476507	1	89BG 4234 MA
DL20		2WD	LH	124	0292-	*BR) 1664055	1	R89BG 4234 MA

	TL16 / TL20EFI / HL16-18 / D18T		LH		0292-		A) 6476509	1	89BG 4234 RA
	TL16 / TL20EFI / HL16-18 / D18T		LH		0292-		*A) 1664058	1	R89BG 4234 RA
	DL20	2WD	LH	124	0292-		A) 6476509	1	89BG 4234 RA
	DL20	2WD	LH	124	0292-		*A) 1664058	1	R89BG 4234 RA
4	TL16	3.62	RH	124			A) 6152146	1	87BG 4234 AA
	TL16	3.62	RH	124		D	*A) 5018715	1	R87BG 4234 AA
	TL16	3.92	RH	6			A) 6152146	1	87BG 4234 AA
	TL16	3.92	RH	6		D	*A) 5018715	1	R87BG 4234 AA
	TL18	3.38	RH	124			A) 6152146	1	87BG 4234 AA
	TL18	3.38	RH	124		D	*A) 5018715	1	R87BG 4234 AA
	TL18	3.62	RH				A) 6152146	1	87BG 4234 AA
	TL18	3.62	RH			D	*A) 5018715	1	R87BG 4234 AA
	TL18	3.92	RH	124			AD) 6152146	1	87BG 4234 AA
	TL18	3.92	RH	124		D	*AD) 5018715	1	R87BG 4234 AA
	HL18	3.92	RH	124			A) 6152146	1	87BG 4234 AA
	HL18	3.92	RH	124		D	*A) 5018715	1	R87BG 4234 AA
	HL18	3.92	RH	6			A) 6152146	1	87BG 4234 AA
	HL18	3.92	RH	6		D	*A) 5018715	1	R87BG 4234 AA
	TL20	3.14	(+) "F"	RH	124		A) 6152146	1	87BG 4234 AA
	TL20	3.14	(+) "F"	RH	124		*A) 5018715	1	R87BG 4234 AA
	TL20	3.14	(+) "F"	RH	6	-0292	A) 6152146	1	87BG 4234 AA
	TL20	3.14	(+) "F"	RH	6	-0292	*A) 5018715	1	R87BG 4234 AA
	DL20	3.14	(+) "F"	RH	124		A) 6152146	1	87BG 4234 AA
	DL20	3.14	(+) "F"	RH	124		*A) 5018715	1	R87BG 4234 AA
	DL20	3.14	(+) "F"	RH	6	-0292	A) 6152146	1	87BG 4234 AA
	DL20	3.14	(+) "F"	RH	6	-0292	*A) 5018715	1	R87BG 4234 AA
	TL20	3.38	RH	124	-0190		A) 6152146	1	87BG 4234 AA
	TL20	3.38	RH	124	-0190	D	*A) 5018715	1	R87BG 4234 AA
	TL20	3.38	RH		0190-		A) 6152146	1	87BG 4234 AA
	TL20	3.38	RH			D	*A) 5018715	1	R87BG 4234 AA
	TL20	3.62	RH	124	-0190		A) 6152146	1	87BG 4234 AA
	TL20	3.62	RH	124	-0190	D	*A) 5018715	1	R87BG 4234 AA
	TL20	3.62	RH	6	0190-		A) 6152146	1	87BG 4234 AA
	TL20	3.62	RH	6	0190-	D	*A) 5018715	1	R87BG 4234 AA
	DL20	3.62	RH		0190-		R) 6152146	1	87BG 4234 AA
	DL20	3.62	RH		0190-	D	*R) 5018715	1	R87BG 4234 AA

TL20INJ	3.92		RH		-0292		A) 6152146	1	87BG 4234 AA
TL20INJ	3.92		RH		-0292	D	*A) 5018715	1	R87BG 4234 AA
DL20	3.92		RH		-0292		A) 6152146	1	87BG 4234 AA
DL20	3.92		RH			D	*A) 5018715	1	R87BG 4234 AA
DL20	3.92		RH	2	0190-		K) 6152146	1	87BG 4234 AA
DL20	3.92		RH	2	0190-	D	*K) 5018715	1	R87BG 4234 AA
DL20	3.92		RH	6	0190-		BK) 6152146	1	87BG 4234 AA
DL20	3.92		RH	6	0190-	D	*BK) 5018715	1	R87BG 4234 AA
CH20	3.64		RH		-0190		1637570	1	V86BB 4234 AA
CH20	3.64		RH				* 5018719	1	+) )
CH20	3.62	4WD	RH		0190-		1629459	1	85GG 4234 CA
CH20	3.62	4WD	RH		0190-		*5018713	1	R85GG 4234 CA
PD23	3.14		RH				A) 6152146	1	87BG 4234 AA
PD23	3.14		RH		-0290	D	*A) 5018715	1	R87BG 4234 AA
PD23	3.38		RH		-0290		A) 6152146	1	87BG 4234 AA
PD23	3.38		RH			D	*A) 5018715	1	R87BG 4234 AA
PD23	3.38		RH		-0290		BJ) 6152146	1	87BG 4234 AA
PD23	3.38		RH			D	*BJ) 5018715	1	R87BG 4234 AA
TV28INJ	3.14	(+)S"	RH				6152146	1	87BG 4234 AA
TV28INJ	3.14	(+)S"	RH			D	* 5018715	1	R87BG 4234 AA
TV28INJ	3.36	(+)S"	RH				6152146	1	87BG 4234 AA
TV28INJ	3.36	(+)S"	RH			D	*5018715	1	R87BG 4234 AA
TV	3.62	XR4X4	RH				1629459	1	85GG 4234 CA
TV	3.62	XR4X4	RH				* 5018713	1	R85GG 4234 CA
TV28INJ	3.62		RH	6	-0987		K) 1629459	1	85GG 4234 CA
TV28INJ	3.62		RH	6	-0987		*K) 5018713	1	R85GG 4234 CA
TV	3.62		RH	6	0987-		K) 6152146	1	87BG 4234 AA
TV	3.62		RH	6	0987-	D	*K) 5018715	1	R87BG 4234 AA
	3.14		RH	6			N) 6152146	1	87BG 4234 AA
	3.14		RH	6		D	*N) 5018715	1	R87BG 4234 AA
	3.36		RH				N) 6152146	1	87BG 4234 AA
	3.36		RH			D	*N) 5018715	1	R87BG 4234 AA
	3.38		RH				P) 1629459	1	85GG 4234 CA
	3.38		RH				*NP) 5018713	1	R85GG 4234 CA
	3.38		RH				R) 6152146	1	87BG 4234 AA
	3.38		RH			D	*NR) 5018715	1	R87BG 4234 AA

	3.62		RH			AN) 6152146	1	87BG 4234 AA
	3.62		RH		D	*AN) 5018715	1	R87BG 4234 AA
	3.62		RH			BN) 1629459	1	85GG 4234 CA
	3.62		RH			*BN) 5018713	1	R85GG 4234 CA
	3.92		RH			P) 1629459	1	85GG 4234 CA
	3.92		RH			*NP) 5018713	1	R85GG 4234 CA
	3.92		RH			R) 6152146	1	87BG 4234 AA
	3.92		RH		D	*NR) 5018715	1	R87BG 4234 AA
TL16	3.62		LH	124		A) 6152147	1	87BG 4234 BA
TL16	3.62		LH	124		*A) 5018718	1	R87BG 4234 BA
TL16	3.92		LH	6		A) 6152147	1	87BG 4234 BA
TL16	3.92		LH	6		*A) 5018718	1	R87BG 4234 BA
TL18	3.38		LH	124		A) 6152147	1	87BG 4234 BA
TL18	3.38		LH	124		*A) 5018718	1	R87BG 4234 BA
TL18	3.62		LH			A) 6152147	1	87BG 4234 BA
TL18	3.62		LH			*A) 5018718	1	R87BG 4234 BA
TL18	3.92		LH	124		AD) 6152147	1	87BG 4234 BA
TL18	3.92		LH	124		*AD) 5018718	1	R87BG 4234 BA
HL18	3.92		LH	124		A) 6152147	1	87BG 4234 AA
HL18	3.92		LH	124		*A) 5018718	1	R87BG 4234 AA
HL18	3.92		LH	6		A) 6152147	1	87BG 4234 AA
HL18	3.92		LH	6		*A) 5018718	1	R87BG 4234 AA
TL20	3.14	(+)F"	LH			A) 6152147	1	87BG 4234 BA
TL20	3.14	(+)F"	LH			*A) 5018718	1	R87BG 4234 BA
DL20	3.14	(+)F"	LH			A) 6152147	1	87BG 4234 BA
DL20	3.14	(+)F"	LH			*A) 5018718	1	R87BG 4234 BA
TL20	3.38		LH		-0190	A) 6152147	1	87BG 4234 BA
TL20	3.38		LH		-0190	*A) 5018718	1	R87BG 4234 BA
TL20	3.38		LH		0190-	AL) 6152147	1	87BG 4234 BA
TL20	3.38		LH		0190-	*A) 5018718	1	R87BG 4234 BA
TL20	3.62		LH		-0190	A) 6152147	1	87BG 4234 BA
TL20	3.62		LH		-0190	*A) 5018718	1	R87BG 4234 BA
TL20	3.62		LH		0190-	AL) 6152147	1	87BG 4234 BA
TL20	3.62		LH		0190-	*A) 5018718	1	R87BG 4234 BA
DL20	3.62		LH		0190-	R) 6152147	1	87BG 4234 BA
DL20	3.62		LH		0190-	*A) 5018718	1	R87BG 4234 BA

TL20INJ	3.92		LH		-0190	A) 6152147	1	87BG 4234 BA
TL20INJ	3.92		LH		-0190	*A) 5018718	1	R87BG 4234 BA
DL20	3.92		LH		-0190	A) 6152147	1	87BG 4234 BA
DL20	3.92		LH		-0190	*A) 5018718	1	R87BG 4234 BA
DL20	3.92		LH		0190-	K) 6152147	1	87BG 4234 BA
DL20	3.92		LH		0190-	*K) 5018718	1	R87BG 4234 BA
DL20	3.92		LH		0190-	BK) 6152147	1	87BG 4234 BA
DL20	3.92		LH		0190-	*BK) 5018718	1	R87BG 4234 BA
CH20	3.64		LH		-0190	1637571	1	V86BB 4234 BA
CH20	3.64		LH			* 5018720	1	+) )
CH20	3.62		LH			6146498	1	85GG 4234 DA
CH20	3.62		LH			* 5018714	1	R85GG 5234 DA
PD23	3.14		LH		-0290	A) 6152147	1	87BG 4234 BA
PD23	3.14		LH		-0290	*A) 5018718	1	R87BG 4234 BA
PD23	3.38		LH		-0290	A) 6152147	1	87BG 4234 BA
PD23	3.38		LH		-0290	*A) 5018718	1	R87BG 4234 BA
PD23	3.38		LH	6	-0290	BJ) 6152147	1	87BG 4234 BA
PD23	3.38		LH	6	-0290	*BJ) 5018718	1	R87BG 4234 BA
TV28INJ	3.14	(+) "S"	LH			6152147	1	87BG 4234 BA
TV28INJ	3.14	(+) "S"	LH			* 5018718	1	R87BG 4234 BA
TV28INJ	3.36	(+) "S"	LH			6152147	1	87BG 4234 BA
TV28INJ	3.36	(+) "S"	LH			* 5018718	1	R87BG 4234 BA
TV	3.62	XR4X4	LH			6146498	1	85GG 4234 DA
TV	3.62	XR4X4	LH			* 5018714	1	R85GG 4234 DA
TV28INJ	3.62		LH	6	-0987	K) 6146498	1	85GG 4234 DA
TV28INJ	3.62		LH	6	-0987	*NK) 5018714	1	R85GG 4234 DA
TV	3.62		LH	6	0987-	K) 6152147	1	87BG 4234 BA
TV	3.62		LH	6	0987-	*K) 5018718	1	R87BG 4234 BA
	3.14		LH			N) 6152147	1	87BG 4234 BA
	3.14		LH			*N) 5018718	1	R87BG 4234 BA
	3.36		LH			N) 6152147	1	87BG 4234 BA
	3.36		LH			*N) 5018718	1	R87BG 4234 BA
	3.38		LH			P) 6146498	1	85GG 4234 DA
	3.38		LH			*NP) 5018714	1	R85GG 4234 DA
	3.38		LH			R) 6152147	1	87BG 4234 BA
	3.38		LH			*NR) 5018718	1	R87BG 4234 BA

		3.62		LH			AN) 6152147	1	87BG 4234 BA
		3.62		LH		D	*AN) 5018718	1	R87BG 4234 BA
		3.62		LH			BN) 6146498	1	85GG 4234 DA
		3.62		LH			*BN) 5018714	1	R85GG 4234 DA
		3.92		LH			P) 6146498	1	85GG 4234 DA
		3.92		LH			*NP) 5018714	1	R85GG 4234 DA
		3.92		LH			R) 6152147	1	87BG 4234 BA
		3.92		LH		D	*NR) 5018718	1	R87BG 4234 BA
	BOOT								
	FOR REAR AXLE SHAFT								
5			TYPE A			-0691	6101700	4	83BG 4697 AA
			TYPE A			0691-	6476491	4	89BG 4697 AA
6			TYPE B				1495776	4	72GG 4697 DA
	CAP PROTECTIVE								
	FOR REAR AXLE SHAFT								
7			TYPE A	Ø47		-0591	6101698	4	83BG 4K240 AA
			TYPE A	Ø52		0591-	6476495	4	89BG 4K420 BA
8		-CH20	TYPE B	Ø60			1505915	4	72GG 4K240 AA
		CH20		Ø60		0190-	1505915	4	72GG 4K240 AA
		CH20				-0190	1495775	4	72GG 4K218 DA
9	JOINT ASSY - CV		-CV20				1493963	4	72GG 4635 BA
10	PLATE - LOCKING								
			-CH20				1505914	12	72GG 4A235 BA
			CH20				1493927	12	72GG 4A235 AA
11	SHAFT - REAR AXLE OUTER STUB								
		-CH20		RH			R) 6146631	1	85GB 4365 BC
		-CH20		LH			R) 6146627	1	85GB 4K137 BC
		+DL20		RH			KB) 6145278	1	85BB 4365 AA
		+DL20		LH			KB) 6145276	1	85BB 4K137 AA
		-CH20		LH			P) 6145276	1	85BB 4K137 AA
		CH20		RH		-0190	1637572	1	V86BB 4365 AA
		CH20		LH		-0190	1637569	1	V86BB 4K137 AA
		CH20		RH		0290-	6146631	1	85GB 4365 BC
		CH20		LH		0290-	6146627	1	85GB 4K137 BC
12	SPRING - PRESSURE								
							6101693	4	83BG 4A191 AA
13	WASHER - THRUST								
							6101689	4	83BG 4K070 AA
14	CIRCLIP								

					6166679	4	+2) 1654960
					1654960	4	E860171 S100
				0691-	6510947	4	W700131 S403
15	CIRCLIP		- CH20		6166681	8	E960100 S103
			CH20			8	E960100 S
16	SPIDER						
	FOR REAR AXLE SHAFT						
	83BG 4234 AB				6115125	4	83BG 4635 BA
	83BG 4234 BB				6115125	4	83BG 4635 BA
	83BG 4234 CB	1619181			6101699)	4	83BG 4635 AA
	83BG 4234 CB	1619181			6161385)	4	+2) 6549882
	83BG 4234 CB	1619181			6549882	4	90AG 4635 AA
	83BG 4234 DB	1619182			6101699)	4	83BG 4635 AA
	83BG 4234 DB	1619182			6161385)	4	
	83BG 4234 DB	1619182			6549882	4	90AG 4635 AA
	83BG 4234 EB				6101699)	4	83BG 4635 AA
	83BG 4234 EB				6161385)	4	86AG 4635 AA
	83BG 4234 EB				6549882	4	90AG 4635 AA
	83BG 4234 FB				6101699)	4	83BG 4635 AA
	83BG 4234 FB				6161385)	4	+2) 6549882
	83BG 4234 FB				6549882	4	90AG 4635 AA
	83BG 4234 GB	1619185			6101699)	4	83BG 4635 AA
	83BG 4234 GB	1619185			6161385)	4	+2) 6549882
	83BG 4234 GB	1619185			6549882	4	90AG 4635 AA
	83BG 4234 HB	6135022			6101699)	4	83BG 4635 AA
	83BG 4234 HB	6135022			6161385)	4	+2) 6549882
	83BG 4234 HB	6135022			6549882	4	90AG 4635 AA
	83BG 4234 JB				6101699)	4	83BG 4635 AA
	83BG 4234 JB				6161385)	4	+2) 6549882
	83BG 4234 JB				6549882	4	90AG 4635 AA
	83BG 4234 KB				6101699)	4	83BG 4635 AA
	83BG 4234 KB				6161385)	4	+2) 6549882
	83BG 4234 KB				6549882	4	90AG 4635 AA
	85BG 4234 AA				6101699)	4	72GG 4635 BA
	85BG 4234 BA				6161385)	4	+2) 6549882
	85BG 4234 BA				6549882	4	90AG 4635 AA
	85BG 4234 CA				6101699)	4	72GG 4635 BA
	85BG 4234 CA				6161385)	4	+2) 6549882
	85BG 4234 CA				6549882	4	90AG 4635 AA
	85BG 4234 DA				1493963	4	72GG 4635 BA
	V86BB 4234 AA			-0190	1493962	4	72GG 4635 AA
	V86BB 4234 BA			-0190	1493962	4	72GG 4635 AA
	87BG 4234 AA				1493963	4	72GG 4635 BA
	87BG 4234 BA				1493963	4	72GG 4635 BA
	89BG 4234 JA			0691-	6476490	4	89BG 4635 AA



17	STOP - REAR AXLE SHAFT BUMPER			-0691	6101690	4	83BG 4A171 AA
				0691-	6476494	4	89BG 4A171 AA
17A	"O" RING						
				0691-	6649267	4	W700739 S300
f18	KIT - REAR AXLE SHAFT REPAIR FOR REAR AXLE SHAFT						
	83BG 4234 AB, BB				6127557	4	83BG 4K258 BA
	83BG 4234 CB, DB, EB, FB, GB, HB, JB, KB				6127556	4	83BG 4K258 AA
	83BG 4234 CB 1619181				6127556	4	83BG 4K258 AA
	83BG 4234 DB 1619182				6127556	4	83BG 4K258 AA
	83BG 4234 GB 1619185				6127556	4	83BG 4K258 AA
	83BG 4234 HB 6135022				6127556	4	83BG 4K258 AA
19	SHAFT ASSY - DRIVE						
	MANUAL				E) 1630187	1	83BG 4602 NB
					(1637460)	MIX	83BG 4602 NC
	MANUAL				*E) 1630194	1	R83BG 4602 NB
					(1637461)	MIX	R83BG 4602 NC
	TL16	MANUAL	124		C) 1637925	1	83BG 4602 KD
	TL16	MANUAL	124		*C) 1637926	1	R83BG 4602 KD
	TL16	MANUAL	124		D) 1637925	1	83BG 4602 KD
	TL16	MANUAL	124		*D) 1637926	1	R83BG 4602 KD
	HL16	MANUAL			DG) 1637925	1	83BG 4602 KD
	HL16CFI			0291-	DG) 6639727	1	91BG 4602 BA
	TL18	MANUAL	124		1637925	1	83BG 4602 KD
	TL18	MANUAL			* 1637926	1	R83BG 4602 KD
	HL18	MANUAL		-0291	6178775	1	87BG 4602 FA
	HL18	MANUAL		-0291	* 1652141	1	R87BG 4602 FA
	HL18	MANUAL			6639726	1	91BG 4602 AA
	TL20H	MANUAL	124		1637925	1	83BG 4602 KD
	TL20H	MANUAL			* 1637926	1	R83BG 4602 KD
	TL20INJ	MANUAL	124		1637925	1	83BG 4602 KD
	TL20INJ	MANUAL	124		*1637926	1	R83BG 4602 KD
	TL	MANUAL	6		1637925	1	83BG 4602 KD
	TL	MANUAL	6		* 1637926	1	R83BG 4602 KD
	TL	AUTOMATIC			6138792	1	84BG 4602 AA
	HL18	AUTOMATIC			6169101	1	87BG 4602 EA
	HL18	AUTOMATIC			*1644919	1	R87BG 4602 EA
	DL20	AUTOMATIC			6169101	1	87BG 4602 EA
	DL20	AUTOMATIC			*1644919	1	R87BG 4602 EA

	D18T		MANUAL		0190-		D 1637925	1	83BG 4602 KD
	D18T		MANUAL		0190-		* 1637926	1	R83BG 4602 KD
	PD23			124	-0190		6118363	1	83BG 4602 HA
	PD23			124	-0190		* 1625293	1	R83BG 4602 HA
	PD23		MANUAL	6			1630186	1	83BG 4602 LB
							(1637458)	MIX	83BG 4602 LC
	PD23		MANUAL	6			* 1630193	1	R83BG 4602 LB
							(1637459)	MIX	R83BG 4602 LC
	TV		MANUAL				L) 1637925	1	83BG 4602 KD
	TV		MANUAL				*L) 1637926	1	R83BG 4602 KD
	TV		AUTOMATIC				6154483	1	85BG 4602 CA
							(1637464)	MIX	85BG 4602 CB
	TV		AUTOMATIC				* 1634197	1	R85BG 4602 CA
							(1637465)	MIX	R85BG 4602 CB
	TV		AUTOMATIC				1648391	1	85BG 4602 CC
	TV		AUTOMATIC				* 1648375	1	R85BG 4602 CC
	TV28INJ	XR4X4	MANUAL				D) 1643942	1	V85BB 4602 BC
	TV28INJ		MANUAL	6			DK) 1643942	1	V85BB 4602 BC
			MANUAL	6			M) 1644964	1	V85BG 4602 AA
			AUTOMATIC	6			M) 1644965	1	V85BG 4602 BA
20	CH20				-0190		1643523	1	V86BB 4602 CA
21	DL20		MANUAL		-0890		G) 6185096	1	88BG 4602 EA
	DL20		MANUAL		-0890	D	*G) 1652269	1	+2) 1664118
	DL20		MANUAL		-0890	D	*G) 1664118	1	R88BG 4602 EB
	TV		MANUAL		-0890		GL) 6166527	1	87BG 4602 CC
	TV		MANUAL		-0890	D	*GL) 1644918	1	R87BG 4602 CC
	TV		MANUAL				GK) 6162451	1	88BG 4602 AA
	TV		MANUAL						
	TV		MANUAL			D	*GK)1644920	1	R88BG 4602 AA
	DL20/CH20		MANUAL				GK) 6162451	1	88BG 4602 AA
	DL20/CH20		MANUAL						
			MANUAL				*GK) 1644920	1	R88BG 4602 AA
			MANUAL				F) 6166527	1	87BG 4602 CC
			MANUAL				*F) 1644918	1	R87BG 4602 CC
			MANUAL				GL) 6518789	1	88BG 4602 EB
			MANUAL				*GL) 1664118	1	R88BG 4602 EB

22	DAMPER - DRIVE SHAFT					
		TV	-1088	FG) 6193289	1	+2) 6200273
		TV	1088-1289	G) 6200273	1	+2) 6500027
		TV	1289-	G) 6500027	1	899T 7L195 AA
		HL18		D) 6464851	1	87BG 7L195 AA
		DL20	-0689	G) 6193290	1	888T 7L195 BE
		DL20	0689-1289	G) 6200274	1	888T 7L195 BF
		DL20	1289-	G) 6500028	1	898T 7L195 AB
f23	KIT UNIVERSAL JOINT REPAIR			K) 1630066	1	V85BB 4635 AA
24	BEARING AND HOUSING - COUPL SHAFT		-1187	1613023	1	83BG 4826 AB
	-CH20		1187-	1613023	1	83BG 4826 AB
25	BEARING ASSY - BALL					
	-CH20			1613022	1	83BG 4812 AA
	STRAP - BOOT RETAINING					
26		Ø33MM	-0589	6145521	4	E863118 S100
		Ø33MM	0589-	1659301	4	E863125 S100
27		Ø72MM		6145523	4	E863119 S100
28		Ø33MM	-0589	6145521	4	E863118 S100
		Ø33MM	0589-	1659301	4	E863125 S100
		Ø35MM	0292-	6145520	4	E863117 S100
29		Ø62MM		6145516	4	E863113 S100
		Ø68MM	0292-	6145517	4	E863114 S100
30	SCREW - SOCKET HEAD CAP					
	-CH20	M8X50		6130713	24	E804339 S
	CH20	M10X60	-0290	1638233	24	E802640 S200
	CH20	M10X60	0290-	6152647	24	E802640 S201
	BOLT - HEX HEAD					
31		M10X1X25		1436053	1	20389 G540
32	-CH20	M8X25		1461203	2	E602188 S72
	CH20	M8X30		1473463	2	E630354 S72
33		M10X1X18		6118344	4	E800359 S200
	SHIM					
34	-CH20	84X25X4		1488478	X	E630030 S71
35	CH20		-0190	1643685	2	V86BB 4A209 AA

36	WASHER - SPECIAL	-CH20				0440570	1	11440570
37	PLATE - LOCKING					0440562	1	11440562
38	WASHER - FLAT		8.4X22X4			1465378	X	E630029 S71
39			12X23X3			1515114	X	E830125 S72
			12.7X19.2X2			6195048	3	E830152 S72
40	NUT - HEX - SELF-LOCKING				D	1536468	X	E620435 S72
		CH20			GB	6078595	3	E620455 S83
						6191252	3	E822136 S72
41	SPRING - DISC	CH20				1493976	4	E832107 S
42	LOCKWASHER	B10				1471160	24	E630174 S71M
43	BOLT - SPECIAL							
		TV	M12X22 / M12X65	-0890		6177624	3	+2) 6200026
		TV	M12X22 / M12X66	-0890		6200026	3	E804572 S203
		DL20	M12X22 / M12X47	-0890		6185117	3	+2) 6200027
		DL20	M12X22 / M12X47	-0890		6200027	3	E804576 S203
		DL20	M12X22 / M12X66	0190-0890		6200026	3	E804572 S203
		TV	M12X22 / M12X66	1089-0890		6200026	3	E804572 S203
		CH20	M12X22 / M12X66	0190-0890		6200026	3	E804572 S203
			M12X22 / M12X44	0890-		G) 6518792	3	W700307 S309